



CITY OF  
**Vancouver**  
WASHINGTON

# Outside Habitation Ordinance

**Jamie Spinelli**  
Homeless Response Manager  
City Manager's Office  
March 5, 2024



# Workshop Purpose

- To provide an early preview of policy options to regulate camping as new resources come online



# Overview



## Current Conditions Overview

- Existing Ordinance
- Contributors to Emergency Declaration



## Ordinance Assessment Framework

- Health & Safety
- Council Priorities
- Constitutionality



## Paradigm Shift

- Deductive vs. Inductive
- Values Focused
- Incremental Changes

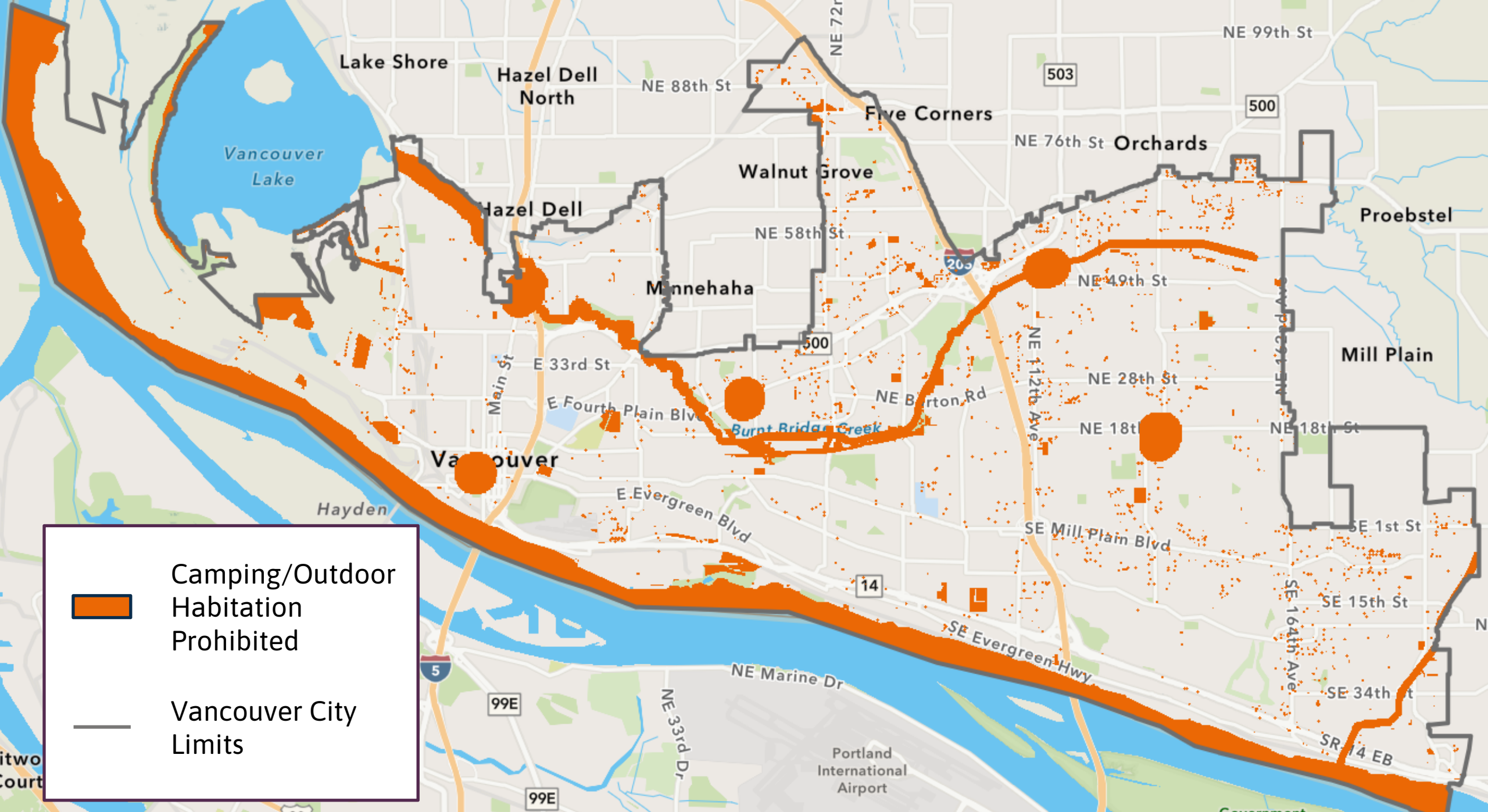


# Camping/Outside Habitation & Storage


Existing rules governing when, where, and how activity can occur

Time	Place	Manner
<ul style="list-style-type: none"><li>• Unlawful to camp or store personal property on any public property 6:30am – 9:30pm</li><li>• Nighttime worker’s exemption/permit</li></ul>	<ul style="list-style-type: none"><li>• Park, street, publicly-owned parking lot</li><li>• 1000’ from Safe Stay</li><li>• 200’ from waterway</li><li>• Public water facility</li><li>• Fire Impact areas of Burnt Bridge Creek</li></ul>	<ul style="list-style-type: none"><li>• Not spelled out in this ordinance</li><li>• Related rules in other sections of VMC</li><li>• “Expectations” under Emergency Order 2023-03</li></ul>





 Camping/Outdoor Habitation Prohibited

 Vancouver City Limits

# Camping Impacts Contributing to Emergency

Increased Impacts	Health/Safety	Emergency Services/Public Resource Usage	Eco Risk
Substance use, overdoses and deaths	X	X	X
Violence/victimization	X	X	
Fires	X	X	X
Untreated physical/mental health conditions	X	X	
Lack of engagement/tending to basic needs	X	X	X
Criminal activity	X	X	
Solid waste/biohazard buildup	X	X	X



# Camping Ordinance Assessment Framework



## Council Priorities

- Livability
- Equity & Inclusion
- Sustainability/Resilience
- Trust & Relationships
- Innovation



## Emergency Declaration

- Risk of death/injury
- Risk of property damage/destruction
- Public peace, safety & welfare



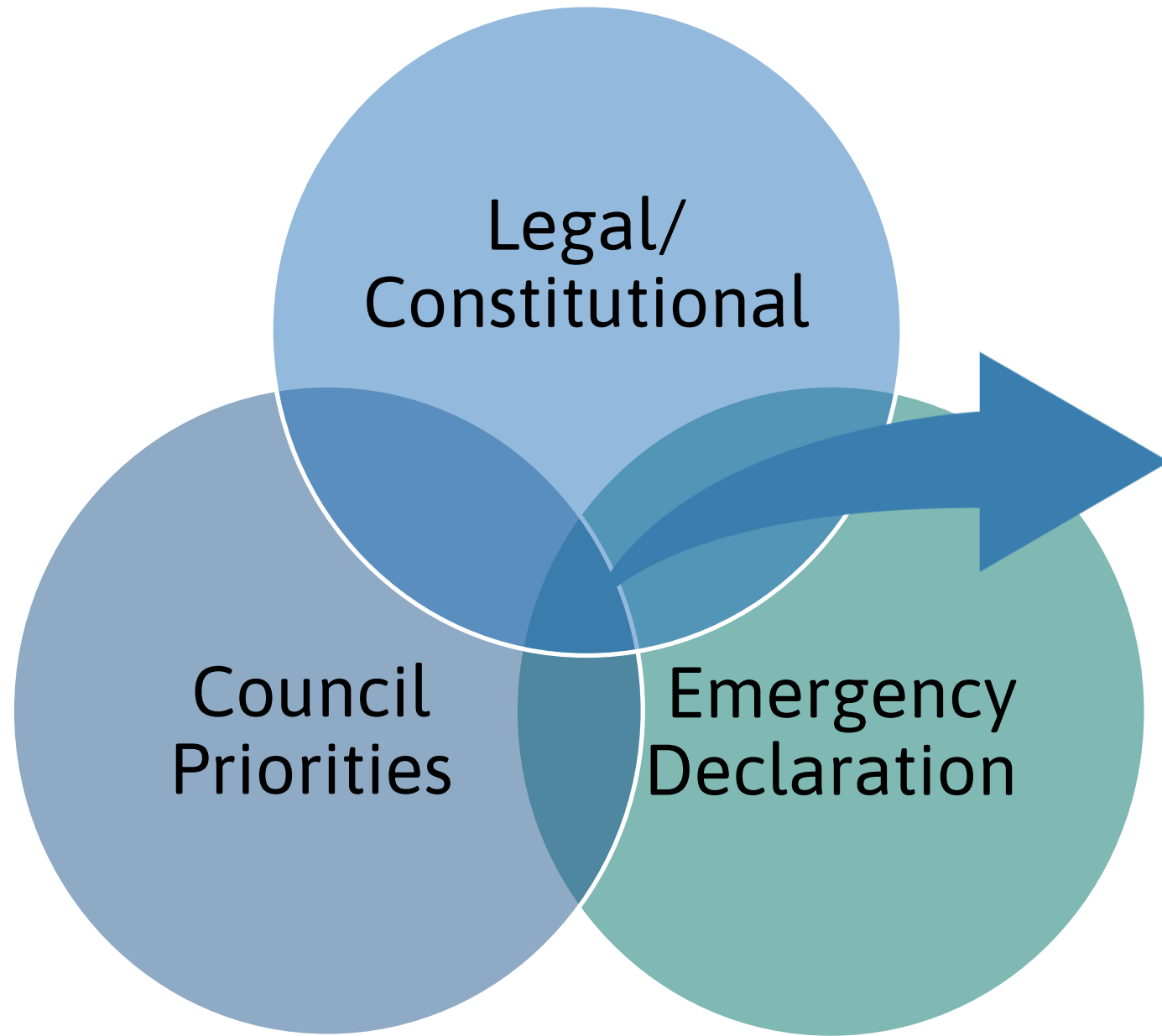
## Legal/Constitutional

- Grants Pass, Boise, etc.
- 8<sup>th</sup> Amendment
- Shelter/housing capacity



# Key Evaluation Lenses

- Public Health and Safety
- Equity
- Environmental/Ecological Risk



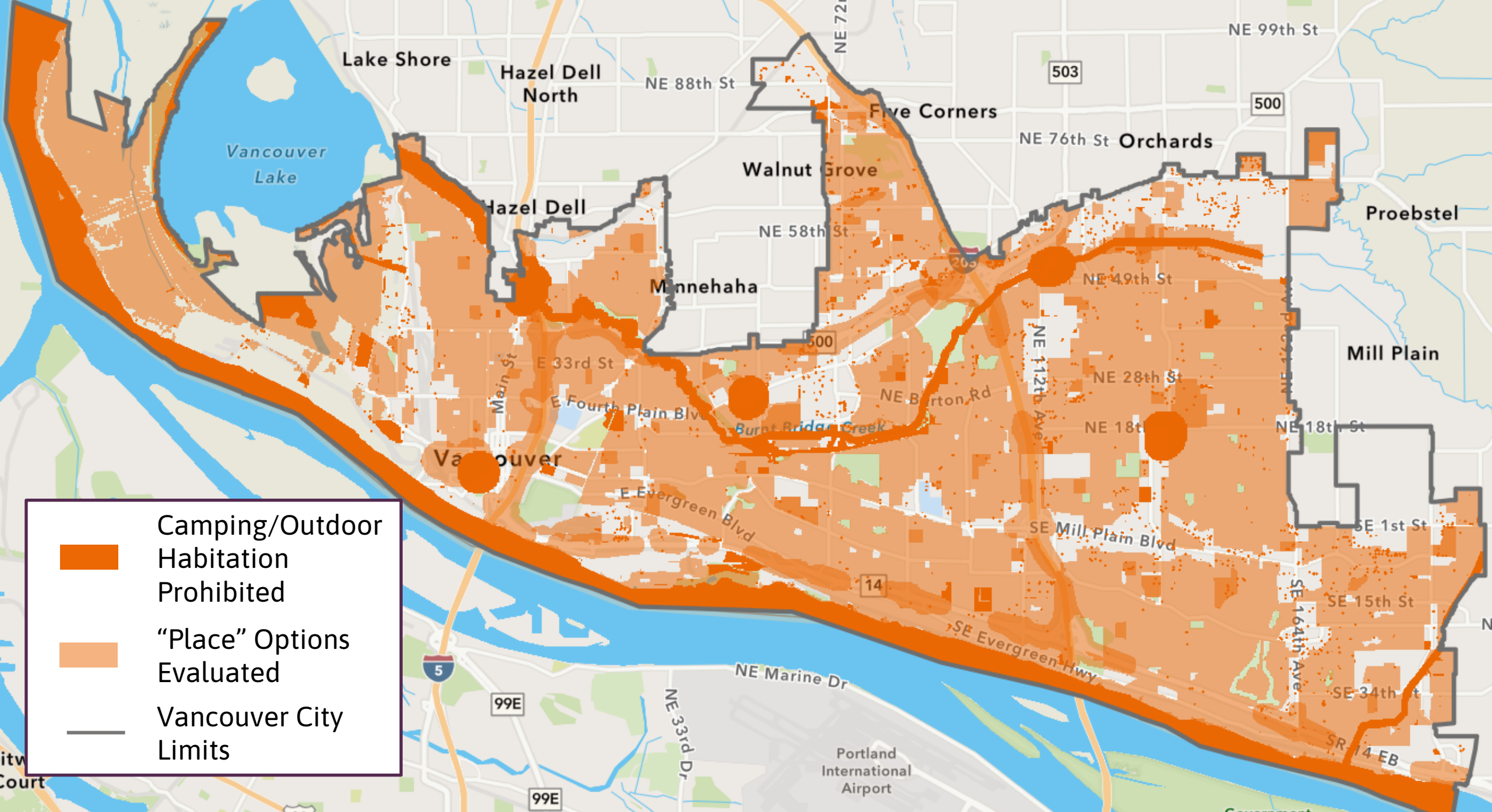


# “Place” Options Evaluated

Location	Health/Safety	Equitable Access/Use	Eco Risk
1000' from all year-round shelters	✓	✓	✓
500' from freeway on/off-ramps	✓	⚠	✓
Within all residential zones	✓	✗	✓
Floodplains and other sensitive ecological habitats/areas	✓	✓	✓
Other park land intended for public use	✓	✓	✓

⚠ Not intended for regular public use





# Paradigm Shift

## More Land Available:

High Number of Low Occupant Camps (Dispersed)

## Fewer Sites Available:

Smaller Number of Larger Occupant Camps (City-Selected Sites)

Proportionate Impacts

Less Predatory Behavior

Ease of Access for City Staff

Acclimate to communal living

Potential to titrate closure



# Next Steps

- Identification of bridge shelter location and determination of bridge shelter construction schedule
- Evaluate order of proposed ordinance amendments to align with bridge shelter opening
- Council consideration of proposed amendments



# Discussion



[Jamie.Spinelli@cityofvancouver.us](mailto:Jamie.Spinelli@cityofvancouver.us) | 360-487-8610 | [cityofvancouver.us](http://cityofvancouver.us)

