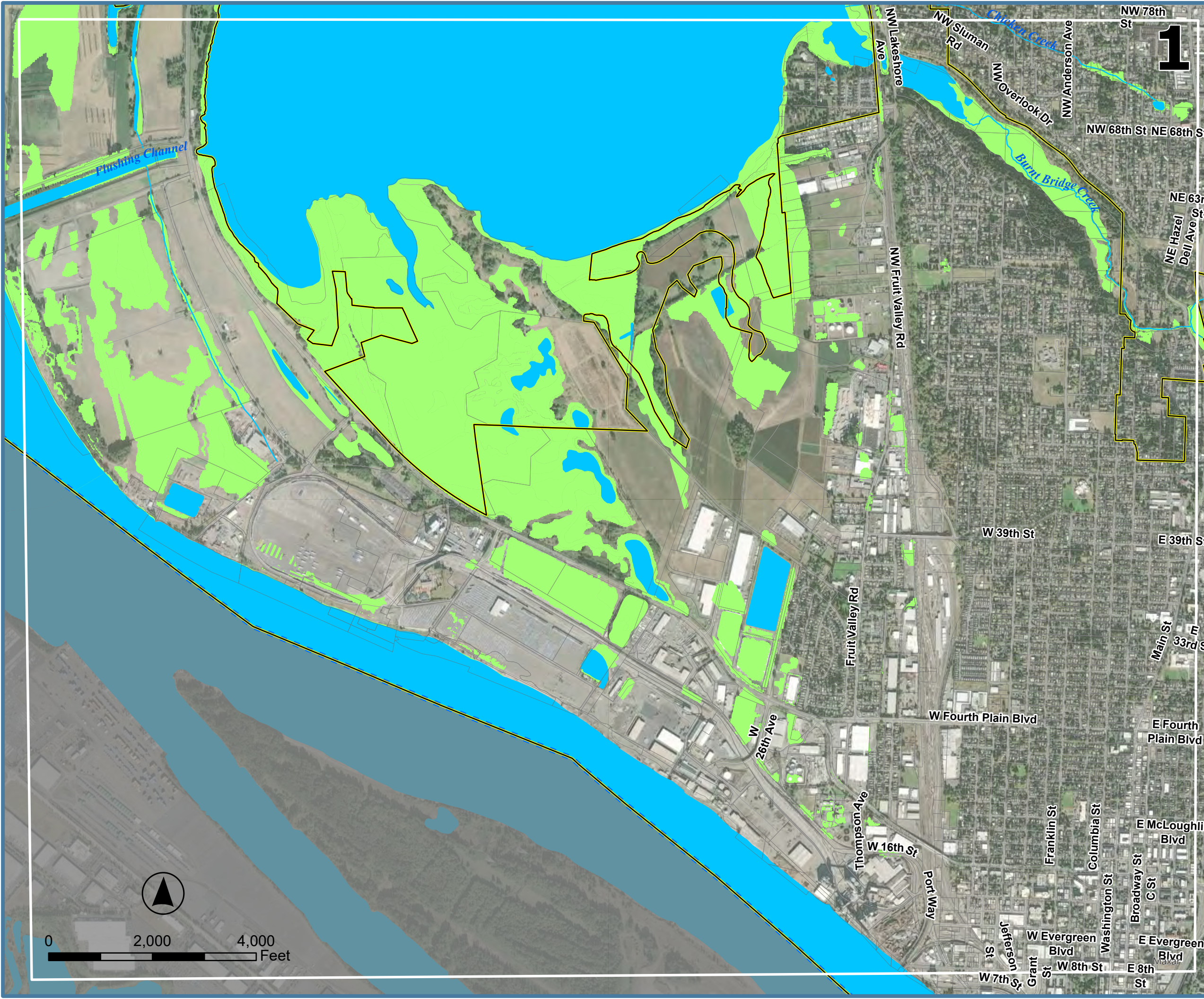
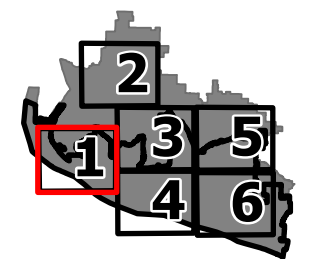


City of Vancouver Critical Areas: Wetlands

-  Vancouver City Boundary
-  Urban Growth Area
-  Taxlots
-  Roads
-  Water
-  Wetlands

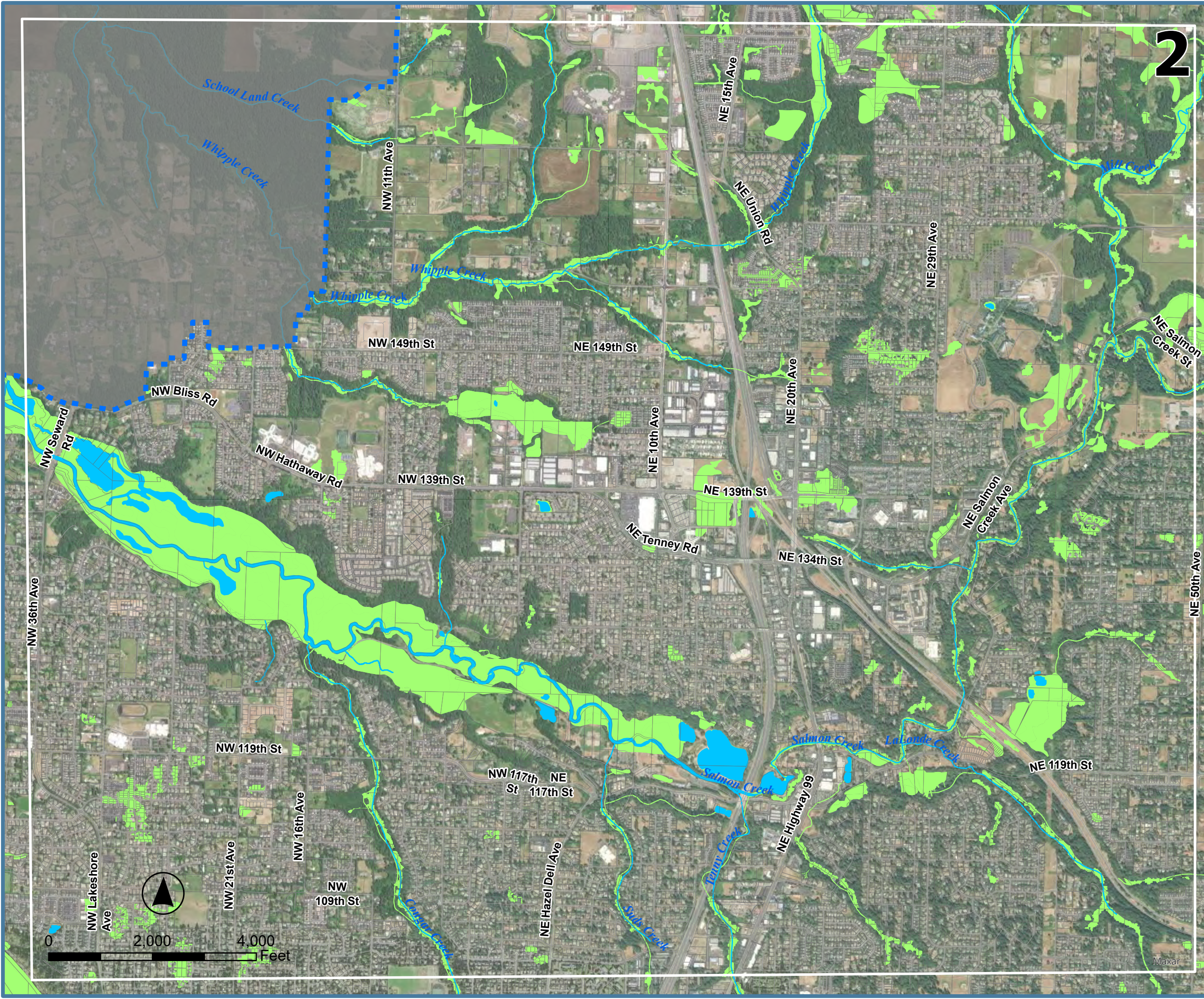
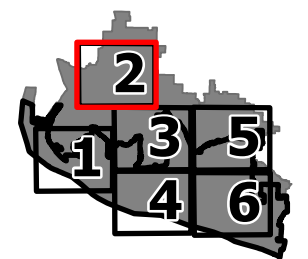
Wetlands are designated by the National Wetland Inventory (NWI) and include swamps, marshes, bogs, and similar areas, but do not include artificial wetlands that are intentionally created such as irrigation/drainage ditches, canals, and detention facilities.



City of Vancouver Critical Areas: Wetlands

-  Vancouver City Boundary
-  Urban Growth Area
-  Taxlots
-  Roads
-  Water
-  Wetlands

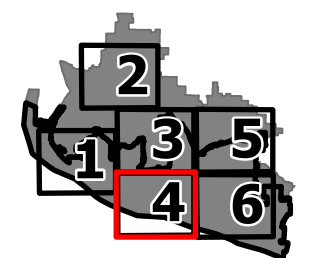
Wetlands are designated by the National Wetland Inventory (NWI) and include swamps, marshes, bogs, and similar areas, but do not include artificial wetlands that are intentionally created such as irrigation/drainage ditches, canals, and detention facilities.



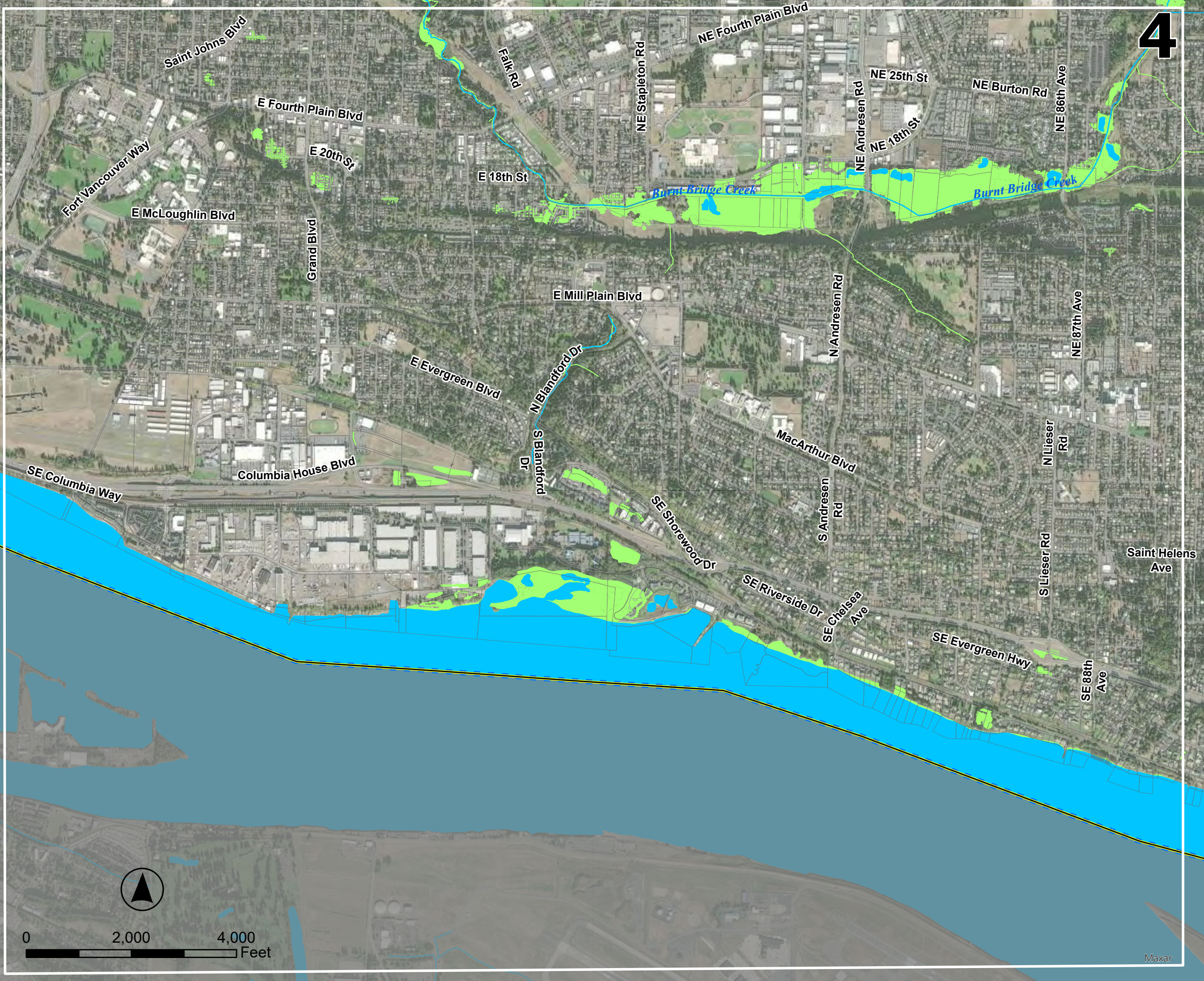
City of Vancouver Critical Areas: Wetlands

-  Vancouver City Boundary
-  Urban Growth Area
-  Taxlots
-  Roads
-  Water
-  Wetlands

Wetlands are designated by the National Wetland Inventory (NWI) and include swamps, marshes, bogs, and similar areas, but do not include artificial wetlands that are intentionally created such as irrigation/drainage ditches, canals, and detention facilities.



4

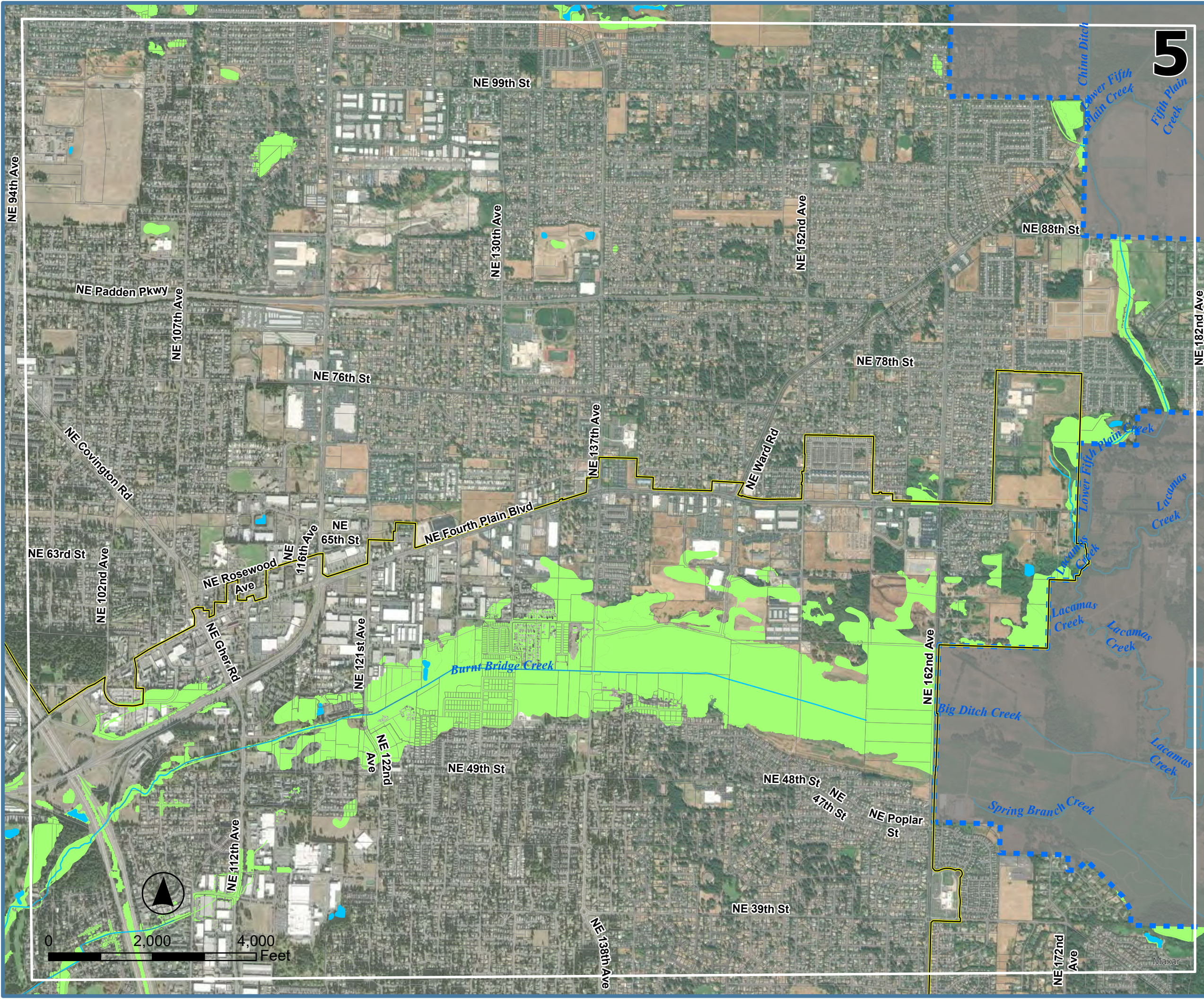
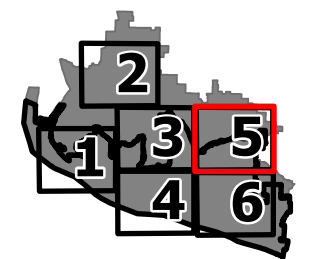


Maxar





City of Vancouver Critical Areas: Wetlands

-  Vancouver City Boundary
-  Urban Growth Area
-  Taxlots
-  Roads
-  Water
-  Wetlands

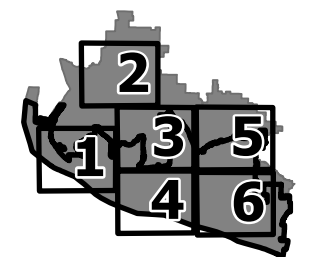
Wetlands are designated by the National Wetland Inventory (NWI) and include swamps, marshes, bogs, and similar areas, but do not include artificial wetlands that are intentionally created such as irrigation/drainage ditches, canals, and detention facilities.



City of Vancouver Critical Areas: Wetlands










-  Vancouver City Boundary
-  Urban Growth Area
-  Water
-  Wetlands

Wetlands are designated by the National Wetland Inventory (NWI) and include swamps, marshes, bogs, and similar areas, but do not include artificial wetlands that are intentionally created such as irrigation/drainage ditches, canals, and detention facilities.



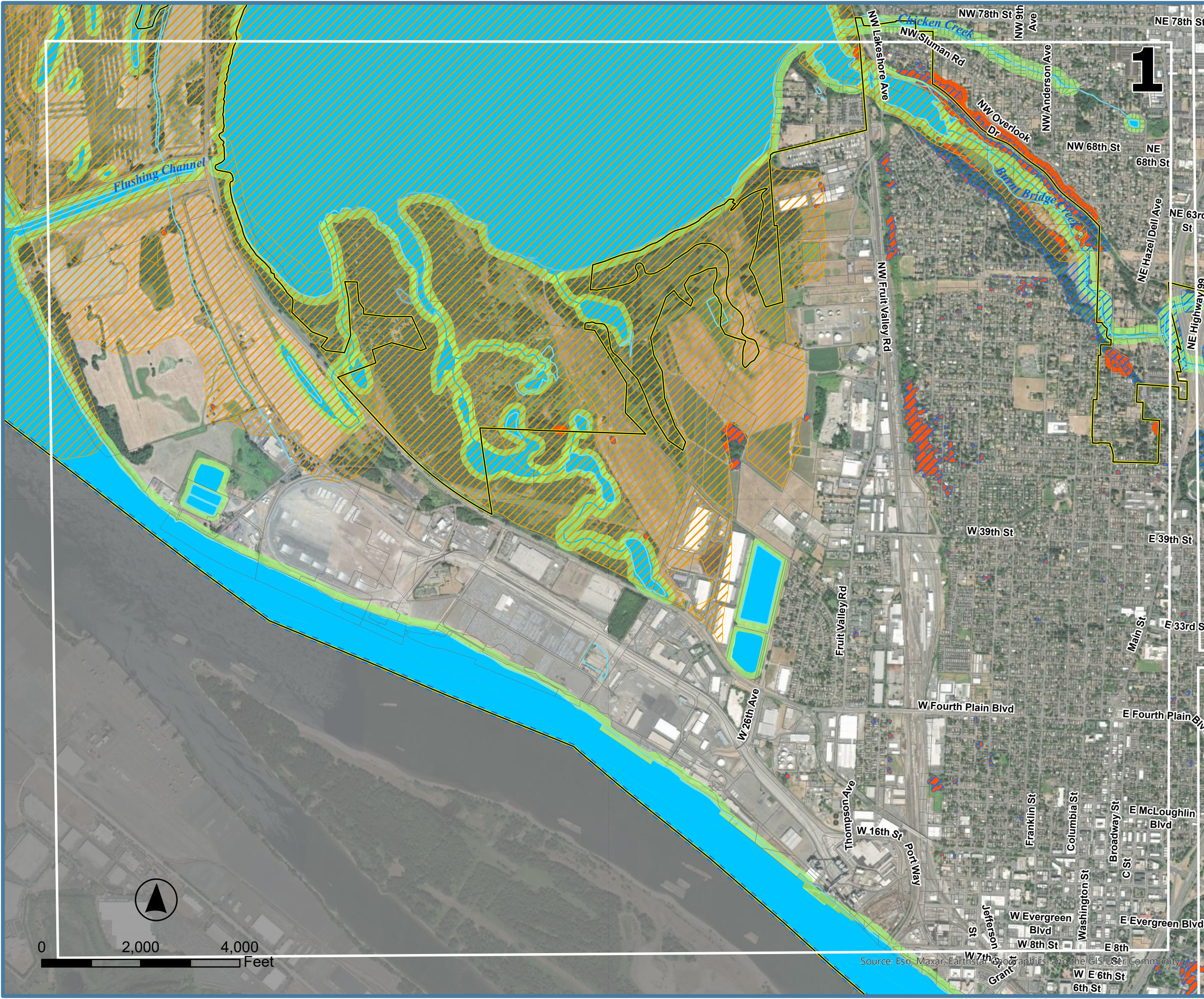
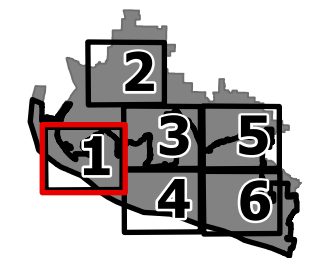
Maxar

City of Vancouver Critical Areas: Fish and Wildlife Habitat Conservation Area

-  Vancouver City Boundary
-  Urban Growth Area
-  Roads
-  Taxlots
-  Water
-  Oak Woodland
-  Priority Habitat Areas
-  Priority Species Area
-  Adopted Riparian Buffers









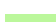
Priority Habitat and Species Areas are specific habitats identified by the Washington State Department of Fish and Wildlife with unique or significant value to a large number of species. These habitats may consist of unique plant species or specific habitat features like cliffs or oak habitat.

Riparian Buffers are regulated areas within a horizontal distance from the ordinary high water mark of water bodies which include lakes, streams, or rivers.



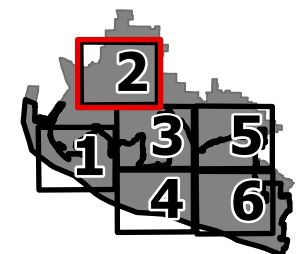
Source: Esri, Maxar, Earthstar, GeoGraphics, and the GIS User Community

City of Vancouver Critical Areas: Fish and Wildlife Habitat Conservation Area

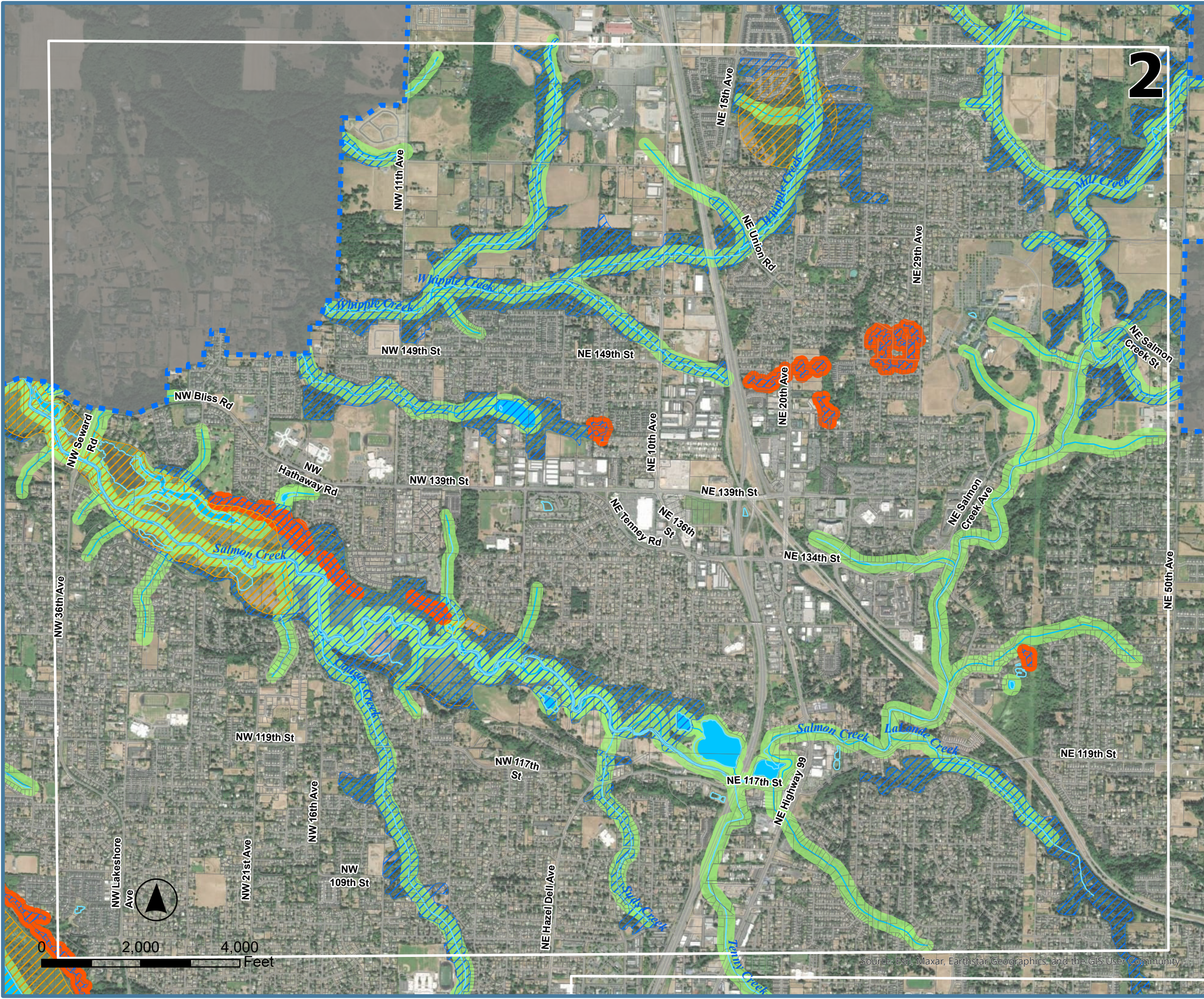
-  Vancouver City Boundary
-  Urban Growth Area
-  Roads
-  Taxlots
-  Water
-  Oak Woodland
-  Priority Habitat Areas
-  Priority Species Area
-  Adopted Riparian Buffers

Priority Habitat and Species Areas are specific habitats identified by the Washington State Department of Fish and Wildlife with unique or significant value to a large number of species. These habitats may consist of unique plant species or specific habitat features like cliffs or oak habitat.

Riparian Buffers are regulated areas within a horizontal distance from the ordinary high water mark of water bodies which include lakes, streams, or rivers.












2



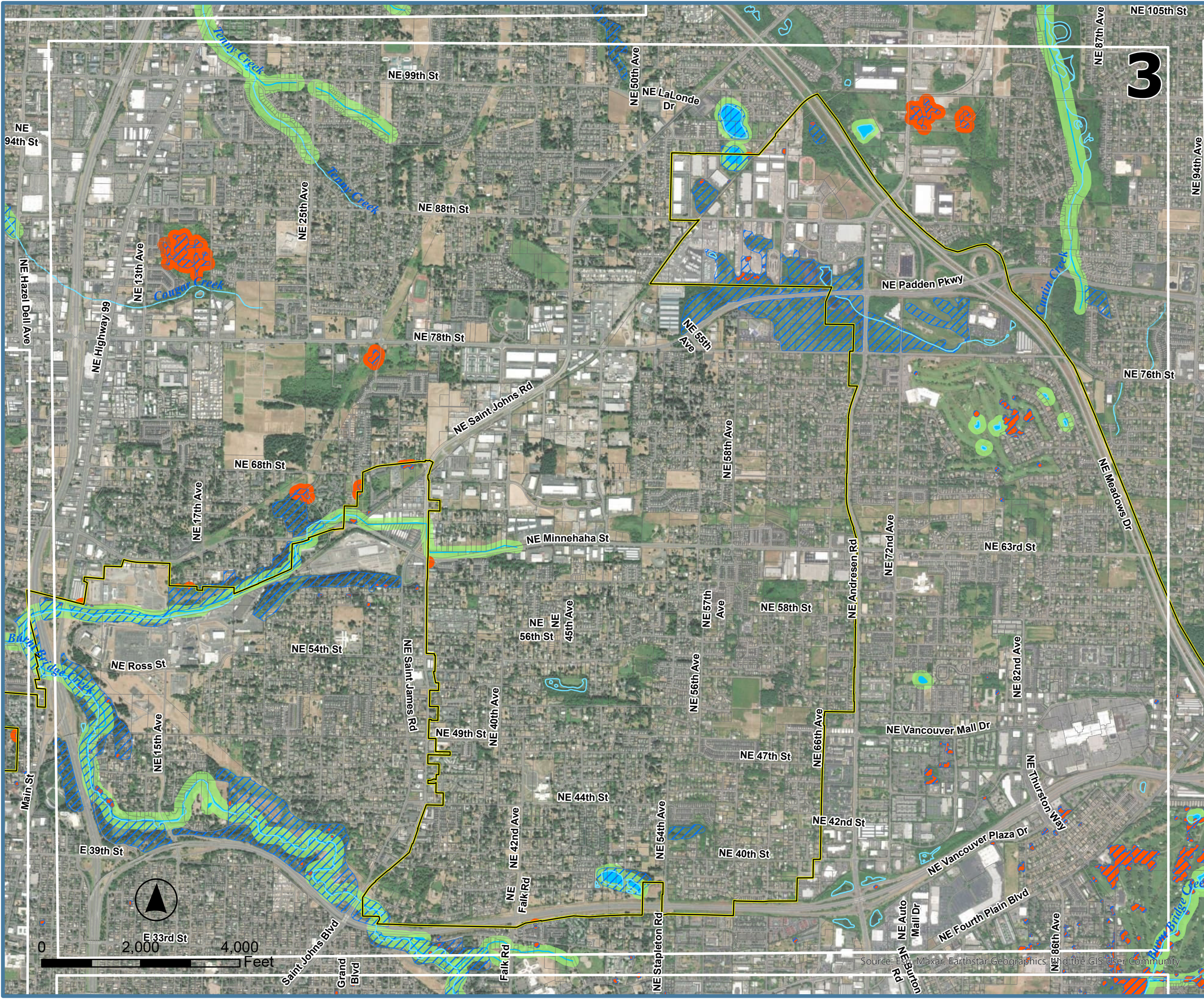
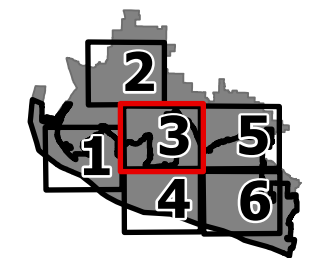
Source: Esri, Maxar, Earthstar Geographics, and the GIS User Community

City of Vancouver Critical Areas: Fish and Wildlife Habitat Conservation Area

-  Vancouver City Boundary
-  Urban Growth Area
-  Roads
-  Taxlots
-  Water
-  Oak Woodland
-  Priority Habitat Areas
-  Priority Species Area
-  Adopted Riparian Buffers



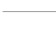





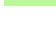
Priority Habitat and Species Areas are specific habitats identified by the Washington State Department of Fish and Wildlife with unique or significant value to a large number of species. These habitats may consist of unique plant species or specific habitat features like cliffs or oak habitat.

Riparian Buffers are regulated areas within a horizontal distance from the ordinary high water mark of water bodies which include lakes, streams, or rivers.



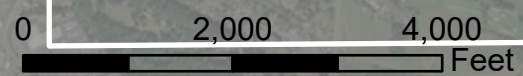
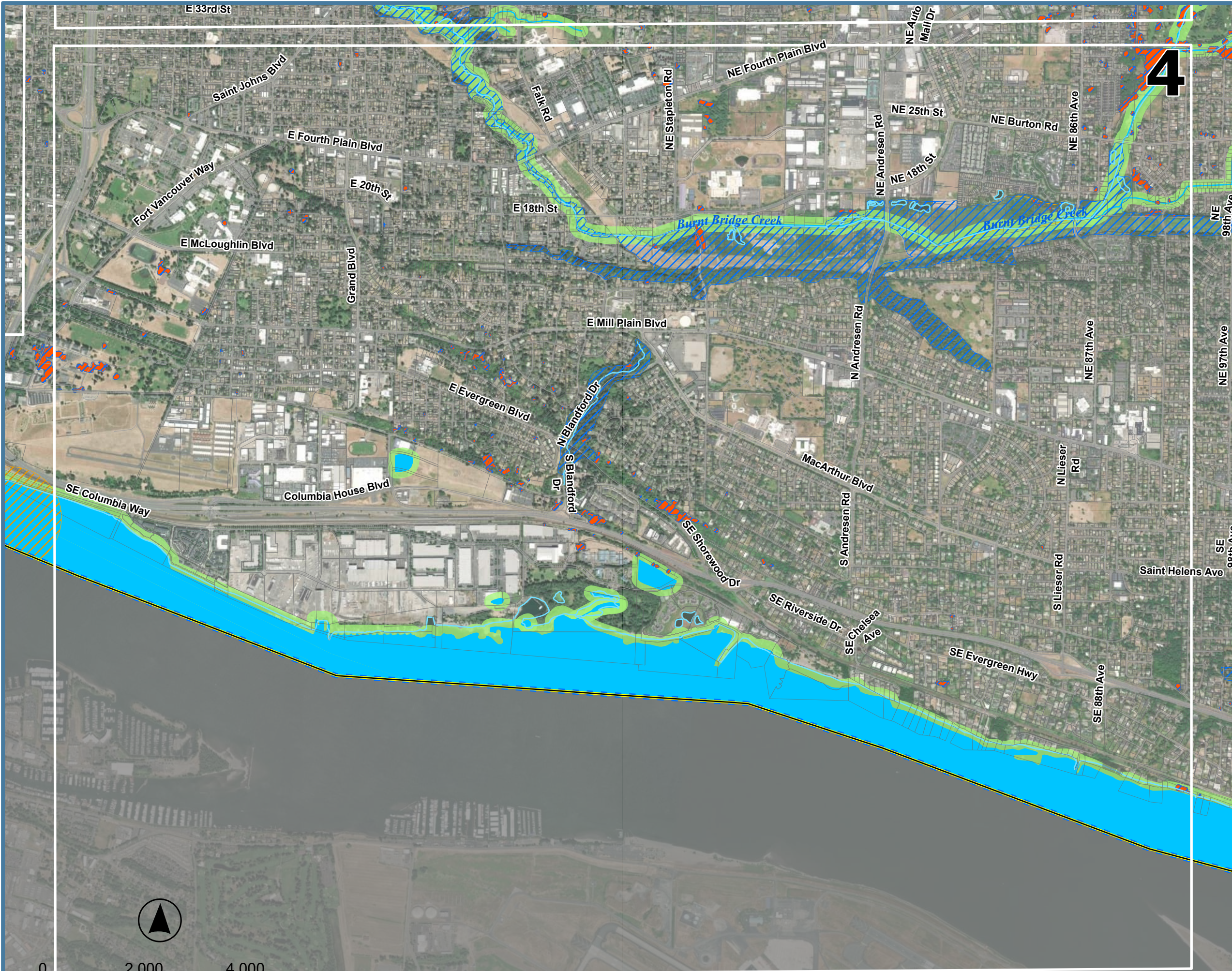
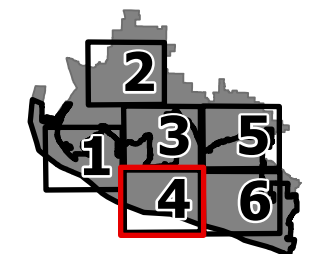
Source: Esri, Maxar, Earthstar Geographics, and the GIS User Community

City of Vancouver Critical Areas: Fish and Wildlife Habitat Conservation Area









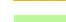
-  Vancouver City Boundary
-  Urban Growth Area
-  Roads
-  Taxlots
-  Water
-  Oak Woodland
-  Priority Habitat Areas
-  Priority Species Area
-  Adopted Riparian Buffers

Priority Habitat and Species Areas are specific habitats identified by the Washington State Department of Fish and Wildlife with unique or significant value to a large number of species. These habitats may consist of unique plant species or specific habitat features like cliffs or oak habitat.

Riparian Buffers are regulated areas within a horizontal distance from the ordinary high water mark of water bodies which include lakes, streams, or rivers.

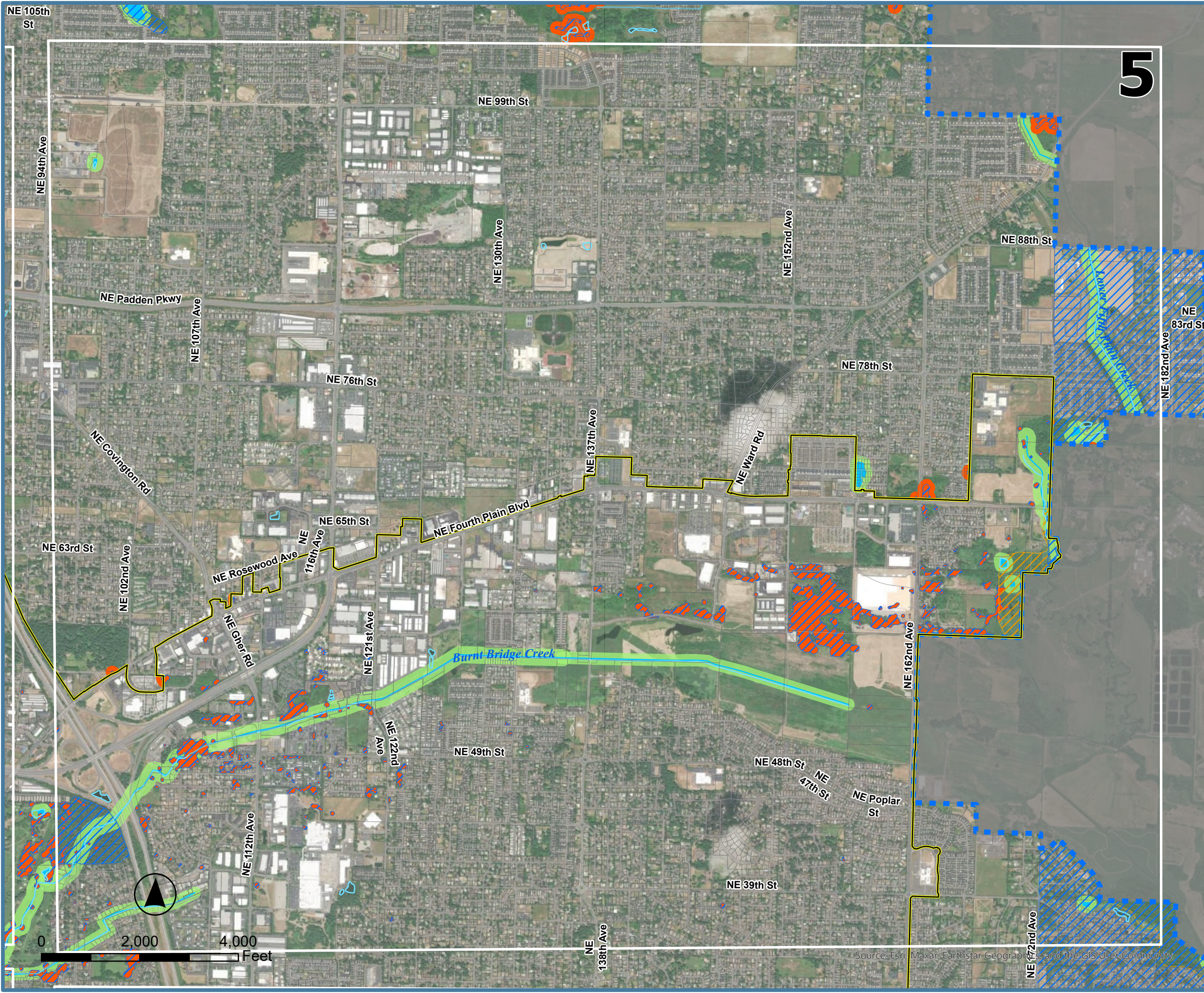
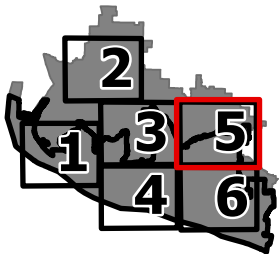


City of Vancouver Critical Areas: Fish and Wildlife Habitat Conservation Area










-  Vancouver City Boundary
-  Urban Growth Area
-  Roads
-  Taxlots
-  Water
-  Oak Woodland
-  Priority Habitat Areas
-  Priority Species Area
-  Adopted Riparian Buffers

Priority Habitat and Species Areas are specific habitats identified by the Washington State Department of Fish and Wildlife with unique or significant value to a large number of species. These habitats may consist of unique plant species or specific habitat features like cliffs or oak habitat.

Riparian Buffers are regulated areas within a horizontal distance from the ordinary high water mark of water bodies which include lakes, streams, or rivers.

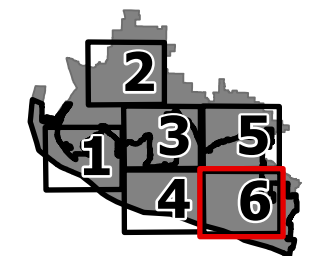


City of Vancouver Critical Areas: Fish and Wildlife Habitat Conservation Area

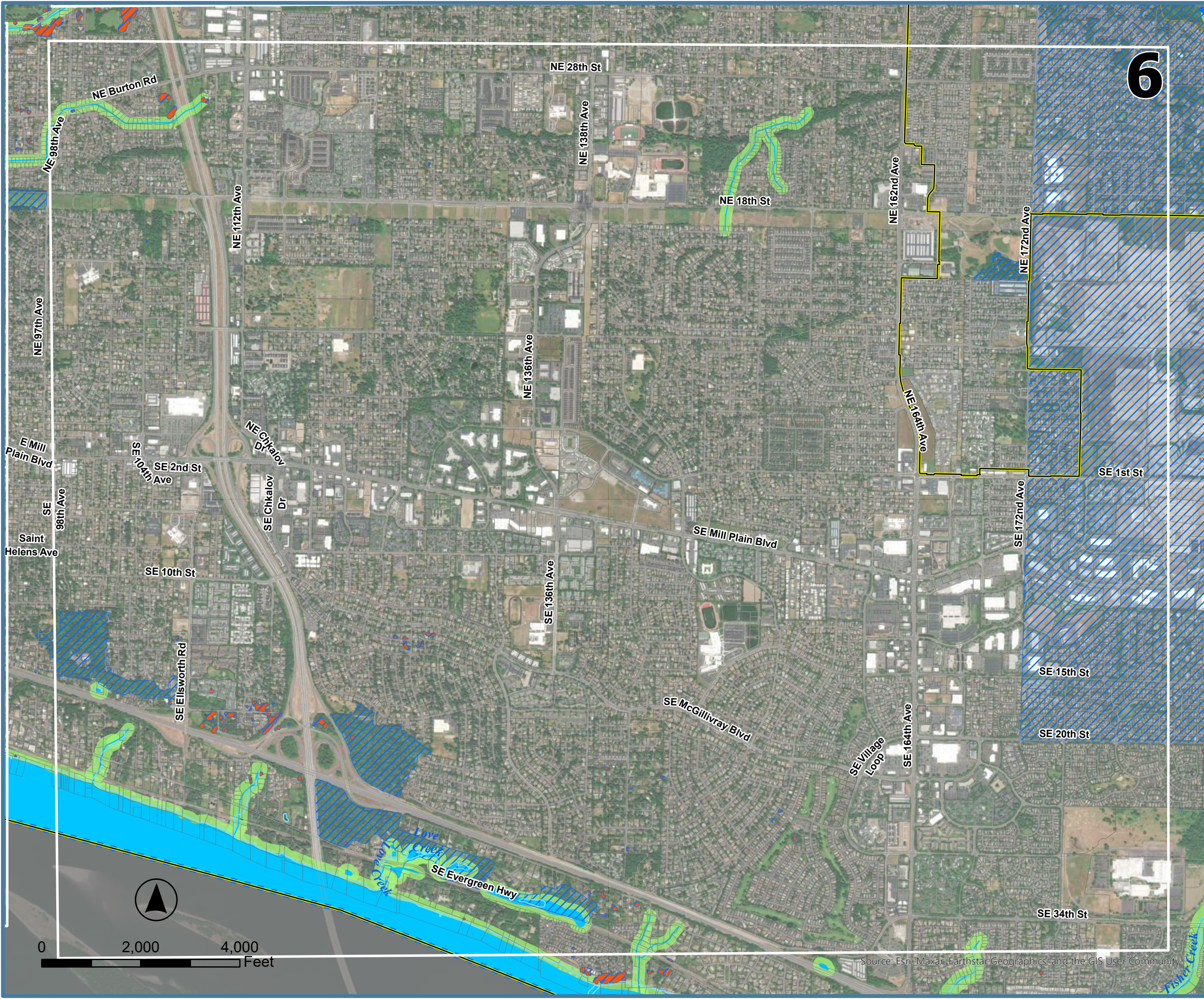
-  Vancouver City Boundary
-  Urban Growth Area
-  Roads
-  Taxlots
-  Water
-  Oak Woodland
-  Priority Habitat Areas
-  Priority Species Area
-  Adopted Riparian Buffers

Priority Habitat and Species Areas are specific habitats identified by the Washington State Department of Fish and Wildlife with unique or significant value to a large number of species. These habitats may consist of unique plant species or specific habitat features like cliffs or oak habitat.

Riparian Buffers are regulated areas within a horizontal distance from the ordinary high water mark of water bodies which include lakes, streams, or rivers.



6



Source: Esri, Maxar, Earthstar Geographics, and the GIS User Community

City of Vancouver Critical Areas: Fish and Wildlife Habitat Conservation Area

-  Vancouver City Boundary
-  Urban Growth Area
-  Water
-  Oak Woodland
-  Priority Habitat Areas
-  Priority Species Area
-  Adopted Riparian Buffers

Priority Habitat and Species Areas are specific habitats identified by the Washington State Department of Fish and Wildlife with unique or significant value to a large number of species. These habitats may consist of unique plant species specific habitat features like cliffs.

Riparian Buffers are regulated areas within a horizontal distance from the ordinary high water mark or water bodies which include lakes, streams, or rivers

