

Parks, Recreation & Cultural Services Comprehensive Plan 2022 – 2032 Update



September 27, 2021
Vancouver City Council Work Session

Dave Perlick, Interim Director
Monica Tubberville, Senior Planner
Laura Hoggatt, Planner

Parks, Recreation & Cultural Services are Essential

Parks, trails, recreation and cultural services:

- Improve quality of life for Vancouver residents.
- Support economic stability and promote smart economic growth.
- Directly address climate action, DEI work and public safety (City Council priorities & objectives).

These **Essential Spaces** cultivate connections between neighbors and nature, contributing to an economically vibrant and resilient community.



Why the Comprehensive Plan Matters



The Parks, Recreation & Cultural Services Comprehensive Plan is an opportunity to renew our vision to reflect the kind of community we want to be. It provides space to dream about what could be and ensures good stewardship of what we already have.

Today's Goal: Review PRAC Recommendations

Innovative approaches to meet growing park demand:

1. Current Park Standards and recognized Best Management Practices
2. Expanded Level of Service analysis to implement policies and guide priorities.
3. Other Park and Open Space providers
4. Reclassify some existing sites to better reflect natural character and park needs in the area.
5. Revised and innovative park development goals and Urban Park classifications to meet the growing demand for parks and natural spaces.

Current Standards & Best Management Practices

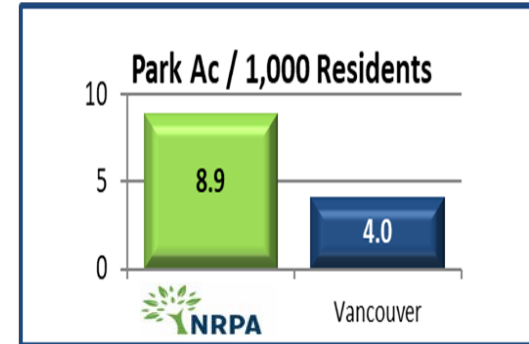
Geographic Distribution or “Walkability”



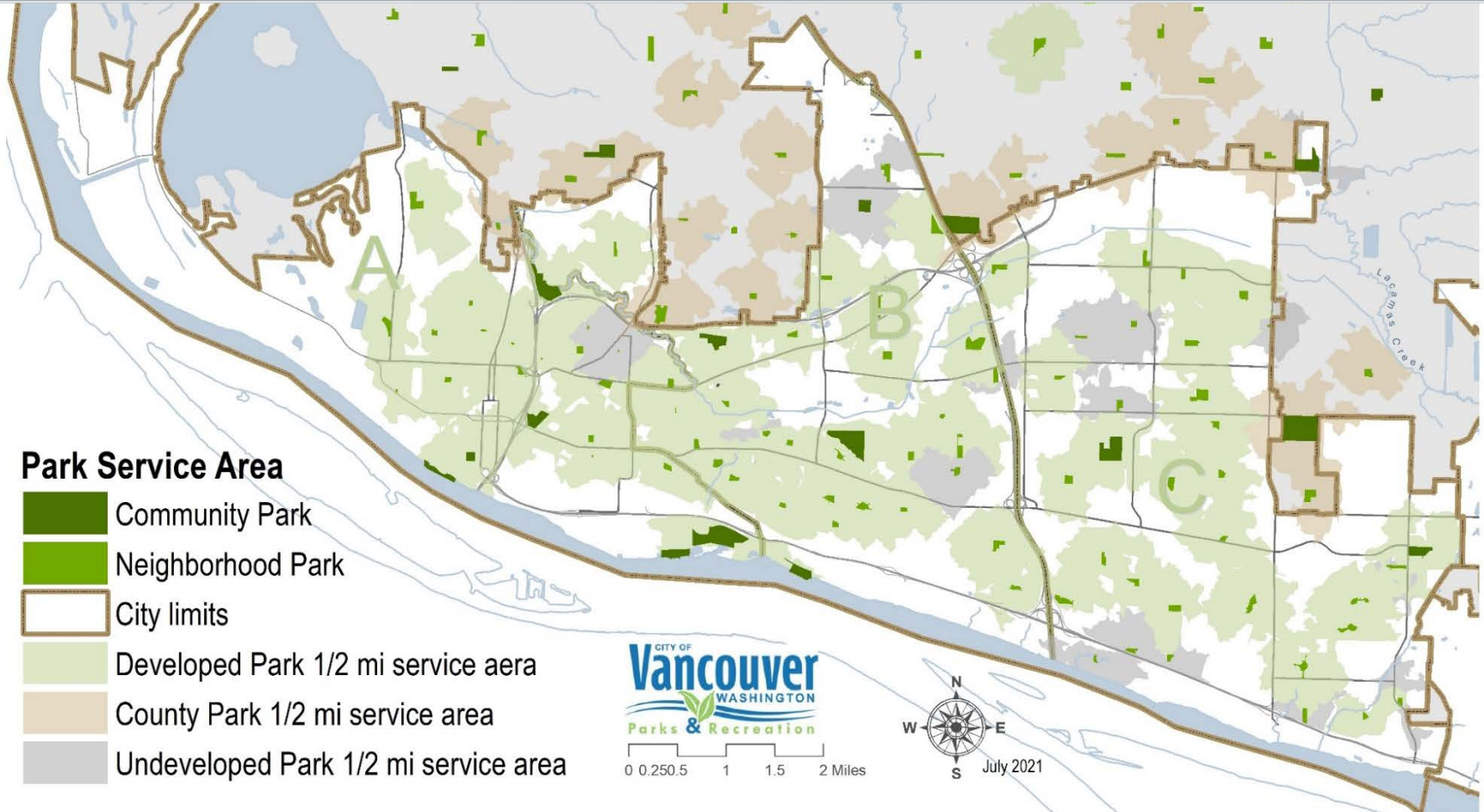
- National Median - ½ Mile / 10-minute Walk
(Trust for Public Lands)
- Vancouver - ½ Mile / 10-minute Walk
 - 75% of population Served (If all park ownerships were built)
 - 50,000 residents without walkable access

Acquisition Standard (acres / 1,000 residents)

- National Median - 8.9 acres
(NRPA - Comparable Cities)
- Vancouver Standard - 6.0 acres
- Vancouver Level of Service - 4.04 acres



Geographic Distribution Metric - Half Mile / 10-Minute Walkability



Park Service Areas + Residential Housing Units



Park Service Areas + Residential Housing Units + Undev. Areas



Recommendation 1: Maintain Current Standards

Equitable access to parks and natural areas has a direct impact on quality of life. Meeting **current standards** for all residents supports the city's goals for climate action, safety and DEI work.

***“More parks are needed on the east side of Vancouver.
It seems like parks are concentrated on the west side of town...”***

– Essential Spaces Survey Feedback

Supports City Council Decision Making Values:

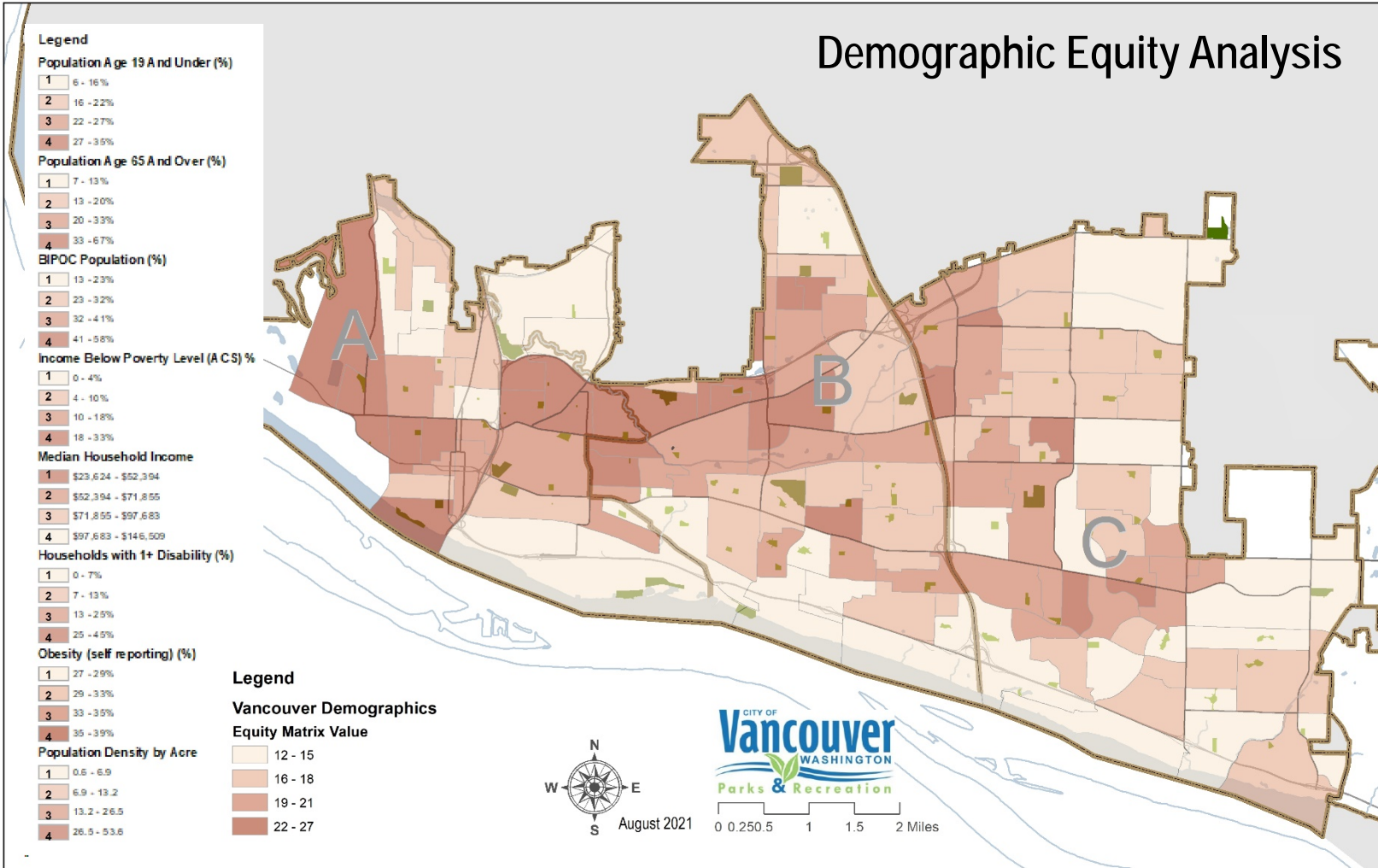
Inclusivity, Safety, Open Spaces, Stewardship

Expanded Level of Service Analysis



1. **Park Standards:** Walkability & Acquisition
2. **Demographic Equity:** GIS Demographic Analysis to identify service areas with high-density neighborhoods and concentrations of vulnerable and underserved residents.
3. **Park Safety & Creativity:** Account for the age, quality and accessibility of park assets to consider the visitor experience at each park site.

Demographic Equity Analysis



Equity Focus Areas

Population Age 19 And Under (%)

Score: 1 6 - 16%
 Score: 2 16 - 22%
 Score: 3 22 - 27%
 Score: 4 27 - 35%

Population Age 65 And Over (%)

Score: 1 7 - 13%
 Score: 2 13 - 20%
 Score: 3 20 - 33%
 Score: 4 33 - 67%

BIPOC Population (%)

Score: 1 13 - 23%
 Score: 2 23 - 32%
 Score: 3 32 - 41%
 Score: 4 41 - 58%

Income Below Poverty Level (ACS) %

Score: 1 0 - 4%
 Score: 2 4 - 10%
 Score: 3 10 - 18%
 Score: 4 18 - 33%

Median Household Income

Score: 4 \$23,624 - \$52,394
 Score: 3 \$52,394 - \$71,855
 Score: 2 \$71,855 - \$97,683
 Score: 1 \$97,683 - \$146,509

Households with 1+ Disability (%)

Score: 1 0 - 7%
 Score: 2 7 - 13%
 Score: 3 13 - 20%
 Score: 4 20 - 45%

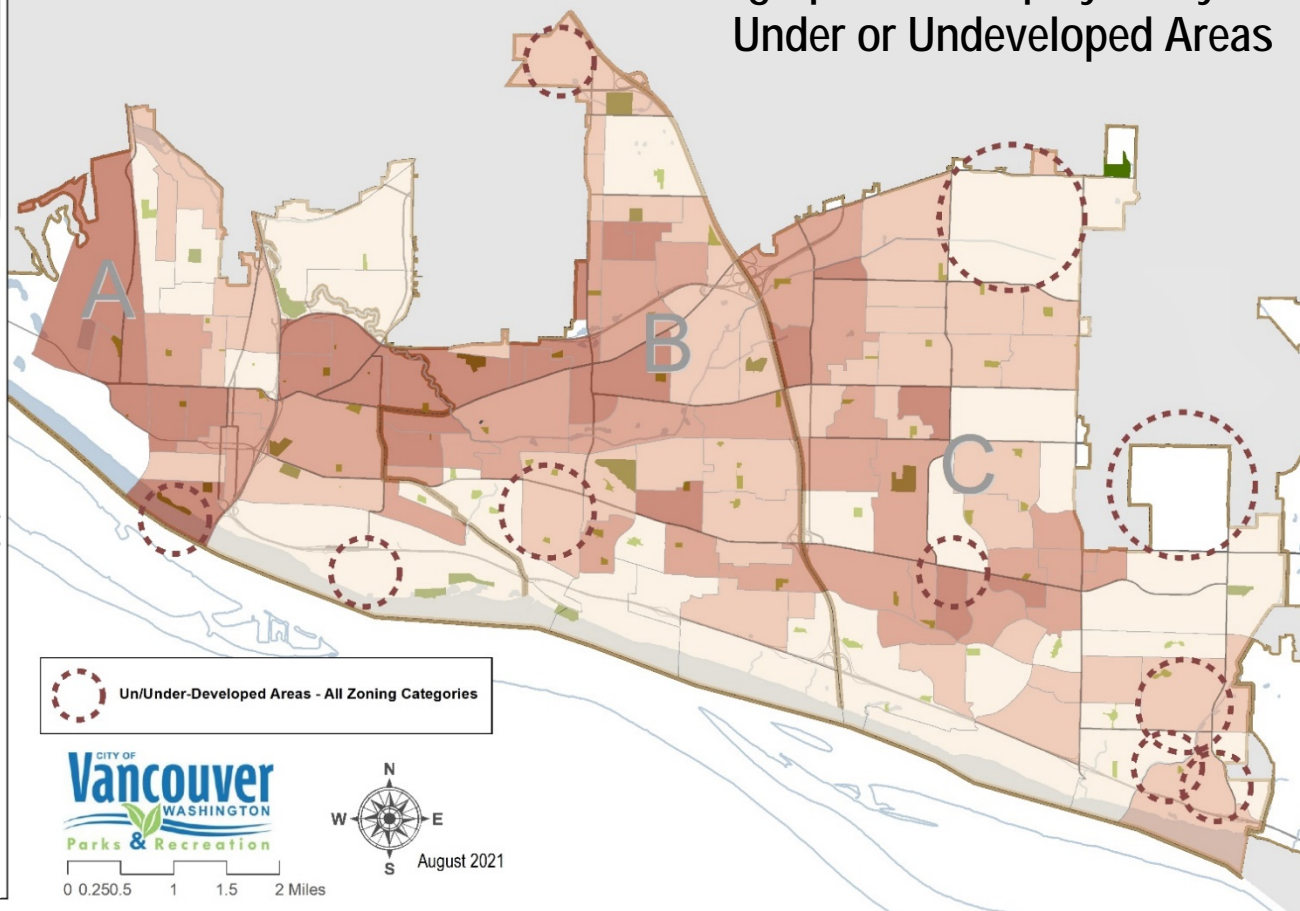
Obesity (self reporting) (%)

Score: 1 27 - 29%
 Score: 2 29 - 33%
 Score: 3 33 - 35%
 Score: 4 35 - 39%

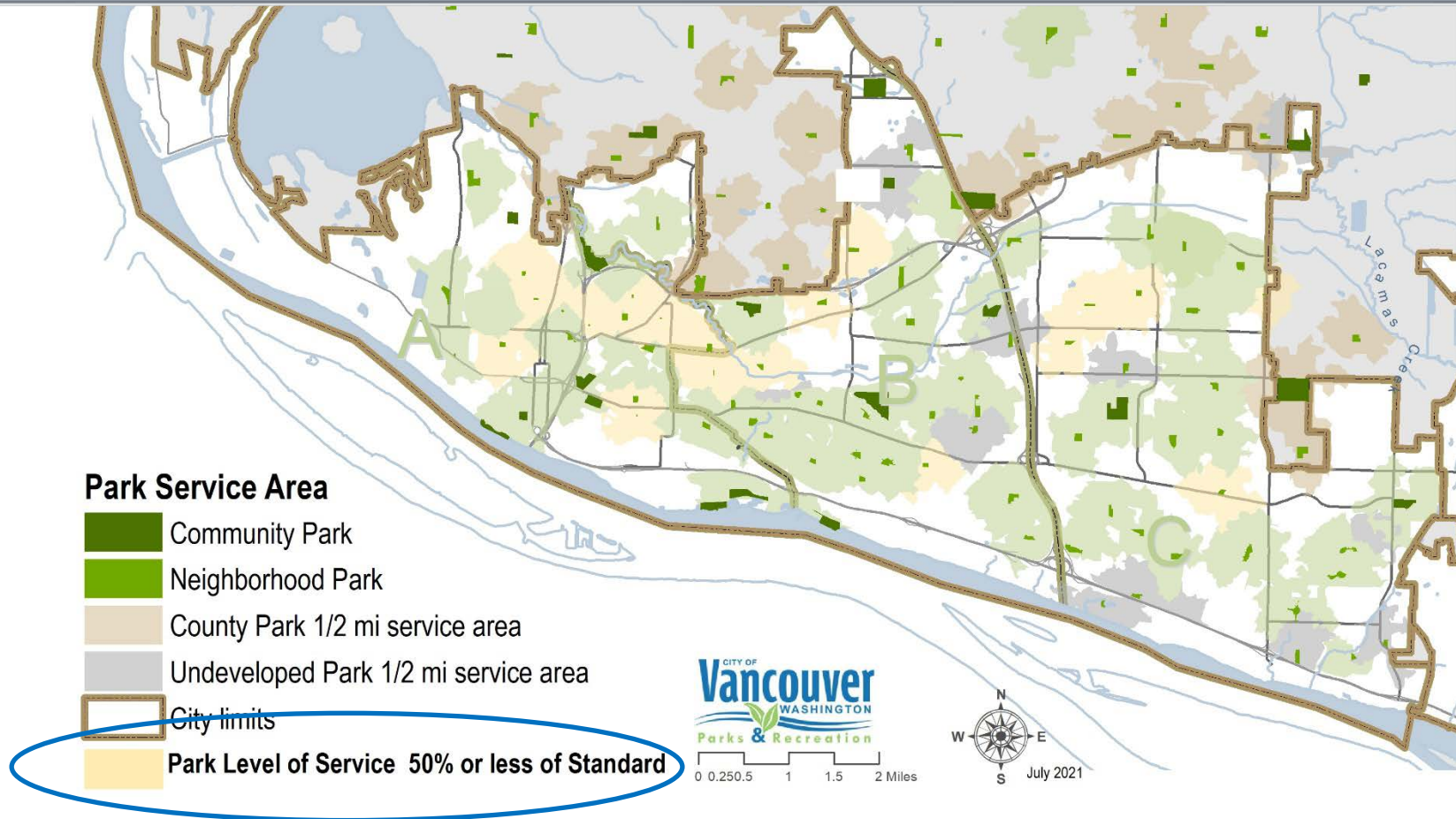
Population Density by Acre

Score: 1 0.6 - 6.9
 Score: 2 6.9 - 13.2
 Score: 3 13.2 - 26.5
 Score: 4 26.5 - 53.6

Demographic and Equity Analysis Under or Undeveloped Areas



Level of Service by Park Site - Example of Safety & Creativity



Recommendation 2: Expand Level of Service Criteria

Utilize more informed criteria for the Level of Service (LOS) evaluation to identify service and equity gaps to prioritize project funding to the areas and residents who need it most.

"I am disabled... I believe in a good, well maintained public park system for all people (of all abilities) to use for multiple purposes.

– Essential Spaces Survey Feedback

Supports City Council Decision Making Values:

Innovation, Legacy, Inclusivity, Diversity, Safety, Open Spaces, Stewardship

Other Providers – What's Included and Why

Many park and natural area assets owned and managed by other providers are currently included in the park inventory based on:

- Comparable assets, recreational opportunities, and natural resources
- Users served include all age groups and abilities
- Similar public access and longevity
- Grouped with the most comparable park type classification



Park Inventory - Other Park and Natural Area Providers

- School parks - joint use agreements for comparable public access
 - Land, development, and maintenance efficiencies
 - 57 acres, 11 sites, with potential for more
 - Some risk of longevity
- Federal, state, county, other public agencies
 - BPA, NPS, WDFW, Clark County
 - 857 acres, 11 sites
- Private
 - 0 acres, 0 sites
 - Risk of longevity and access

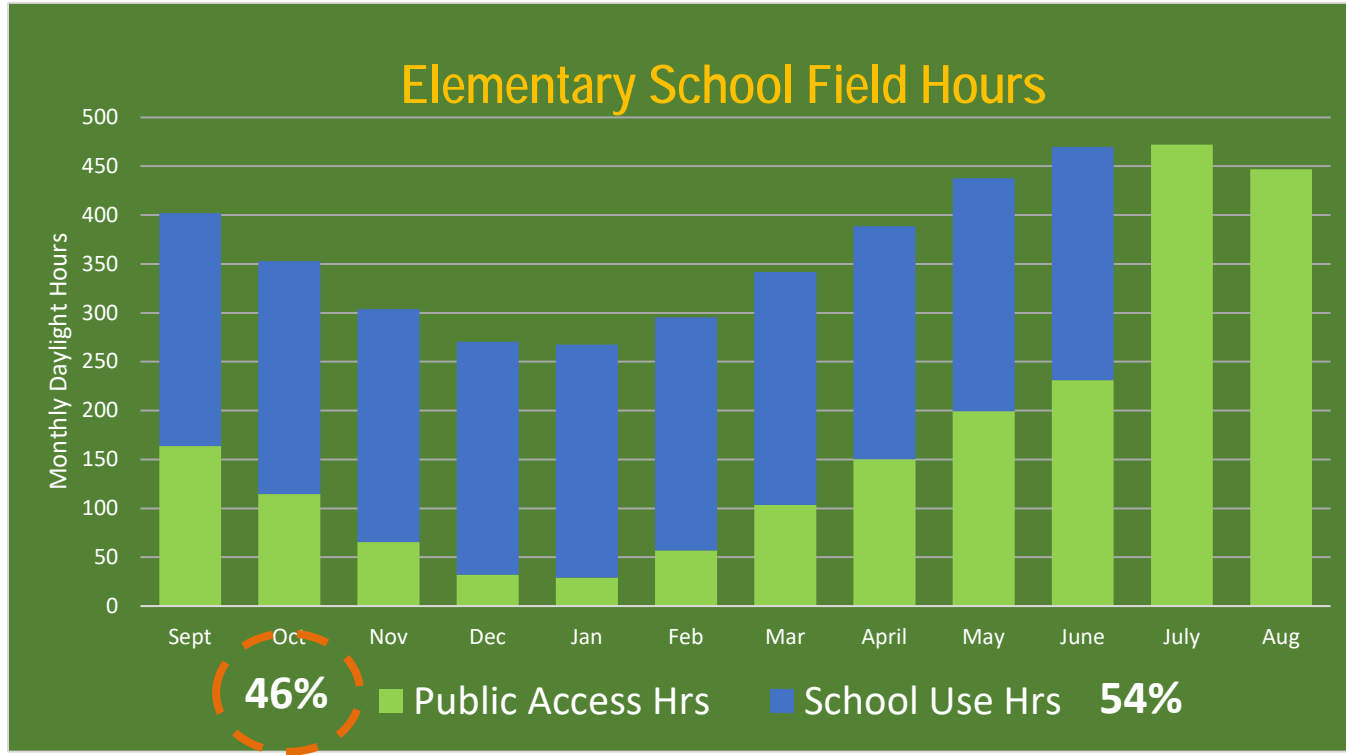
Park Name	Type	Ownership	Total Acres
Burnt Bridge Creek School Park	NH	Vancouver	3.20
Ellsworth School Park	NH	Vancouver	5.22
Endeavour School Park	NH	Vancouver	2.48
Harney School Park	NH	School District	3.00
Lieser School Park	NH	School District	2.00
Marion School Park	NH	School District	5.00
Peter S. Ogden School Park	NH	Vancouver	4.85
Shumway School Park	NH	Vancouver	0.44
Washington School Park	NH	School District	3.00
Bagley School Park	CP	Vancouver	15.30
Fisher Basin School Park	CP	Vancouver	12.32
BPA / BBC Trail segment	RNA	BPA	10.00
Frenchman's Bar Trail	RNA	Clark County	48.00
NPS Waterfront	UNA	NPS	21.01
Frenchman's Bar	RP	Clark County	162.53
Vancouver Lake	RP	Clark County	234.00
Columbia Springs	SF	WDFW	50.00
Curtin Springs Wildlife Habitat Area	SF	Clark County	33.08
English Pit Rifle Range	SF	Clark County	6.00
Fort Vancouver National Historic Site	SF	NPS	229.00
Harmony Sports Complex	SF	Clark County	58.05
Vancouver Tennis Center	SF	School District	5.73
TOTAL			914.21

School Properties

Public School Inventory (w/n City Limits)		
	Field Acres	Site Acres
Elementary Schools	155.02	431.60
PIF District A	30.08	56.62
PIF District B	53.89	123.87
PIF District C	71.05	251.11
Middle Schools	55.24	110.37
PIF District A	0.00	22.20
PIF District B	8.87	29.65
PIF District C	46.37	58.52
High Schools	106.18	201.79
PIF District A	49.04	82.13
PIF District B	15.59	59.80
PIF District C	41.56	59.87
Totals	316.44	743.76

- While the schools are public facilities, their primary mandate is for educational purposes and student safety, and generally unavailable while school activities are in session.
- General school hours are between 7 am and 6 pm on weekdays from September to June. Other school activities are scheduled from 6pm to 8pm or later and some weekend and summer days which further limit public access.
- High school and middle school fields are generally used for school activities or reserved by other entities with maintenance and insurance cost requirements.
- Field Acres at Elementary School could be considered for limited general public access, and most comparable to Neighborhood Park assets.

Elementary School Availability for Public Use



BMP's Regarding School Availability for Recreation

Organization/Agency	School Acres		Field Acres		
	Yes	No	Yes	Sometimes	No
NRPA		✓		✓	
Trust for Public Lands		✓			✓
Comparable Jurisdictions		✓		✓	

- All recognize the limited availability of school grounds for recreational purposes.
- All jurisdictions acknowledge the importance of effective partnerships between cities, school districts and leagues to better serve the community.

Park Level of Service – 2022 With Elementary Schools

	Neighborhood Park Standard (Acres/ 1000)	Current LOS	LOS with 46% Elem Field Ac
Neighborhood Park	2.00	1.29	1.66
PIF District A		1.12	1.48
PIF District B		1.59	2.00
PIF District C		1.17	1.51

- With 46% availability of elementary school fields the level of service for Neighborhood Parks increases by approximately 0.40 acres / 1,000 residents.

Recommendation 3: Add Elementary Fields

Add elementary school fields to the Neighborhood Park inventory at a 46% equivalence. This reflects the lived experience of many residents who use these spaces as parks and natural areas outside of school hours. However, with an LOS increase of 0.4 acres per 1,000 residents, it does little to get Vancouver closer to meeting the identified park standard.

"I like to enjoy nature at the park!"

– Bell, Young Community Outreach Participant

**Supports City Council Decision Making Values:
Open Spaces, Seeking Partnerships, Stewardship**

Reclassify Existing Park Sites

Neighborhood Park to Urban Natural Area:

- Behrens Woods, Evergreen School Park, Hanna Acres and Sam Brown

Neighborhood Park to Community Park:

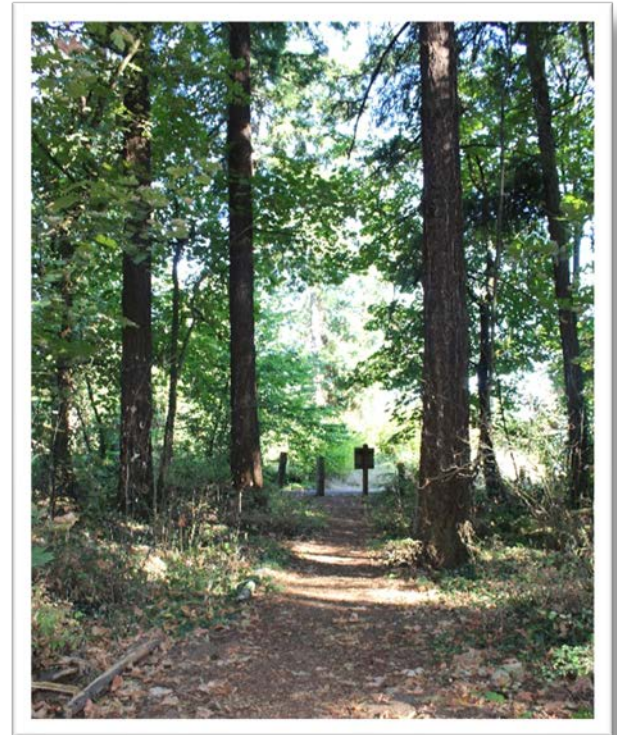
- Oakbrook and Dollie & Ed's Park

Urban Natural Area:

- Portion of David Douglas Community Park that cannot be developed

Community Park to Neighborhood Park:

- Waterworks Park



Recommendation 4: Reclassify Some Existing Park Sites

Classify parks to more accurately reflect site character and the experience park visitors can expect at a property and make the most efficient use of limited funding to meet park needs.

“I don’t know what we would have done during the lock down if we didn’t have parks and trails.”
– Essential Spaces Survey Feedback

Supports City Council Decision Making Values:
Stewardship, Open Spaces, Safety, Legacy

Innovative Park Development Goals



Themed Play Areas



Expanded Support Facilities



Universal Accessibility



Pollinator Habitat Support



Improve Underutilized Sites

Urban Center Park Classifications

Urban Center park types have different development, use and maintenance needs to serve high density areas.

- Mixed Use
- High Density Residential
- Commercial / Industrial
- Park System Improvements to assure future RCW compliance

Park types include
Civic Plazas and **Linear Parks**



** Potentially funded through future Commercial, Industrial, Mixed Use Park Impact Fee*

Urban Center Park Classifications

Civic Plazas

- Unique community identity
- Centrally located
- Target one acre or average city block size for sufficient space to support broader community events.
- Connectivity to pedestrian network
- Variety of natural and built spaces
- Cultural services & public art space

Linear Parks

- Follow linear corridors
- Seating or respite areas
- Connectivity to main pedestrian corridors including the regional trail system
- Small play area, viewpoints, landscaping, etc.



Recommendation 5: Revise Dev. Goals & Urban Center Parks

Revised park development goals and add Urban Center Parks to support the increasing urban density throughout the city and help create unique neighborhood identities while maximizing the use of existing infrastructure and public investment.

“We love going to the new Waterfront Park. The revitalized areas are so enjoyable. We didn’t used to go downtown much. Now we go often and have dinner and enjoy the walking paths.

– Community Outreach Participant

Supports City Council Decision Making Values:
Open Spaces, Stewardship, Climate, Safety, Innovation, Legacy

Next Steps

Draft Comprehensive Parks, Recreation and Cultural Services Plan

- Draft Goals and Objectives
- Draft Capital Facilities Plan
- Final Outreach Report



Questions and Discussion



Dave Perlick, Interim Director
Monica Tubberville, Senior Planner
Laura Hoggatt, Planner