

Vancouver Wastewater Solids Planning Program

Frank Dick, Senior Civil Engineer
Public Works Department

Samantha Salvia, Project Manager
Brown and Caldwell

Council Workshop
September 11, 2023



Agenda

- Opening Remarks – Lon Pluckhahn
- Vancouver's Wastewater Solids Renewal Program
- Decision-making Process
- Prioritization Activity and Council Discussion
- Closing Comments

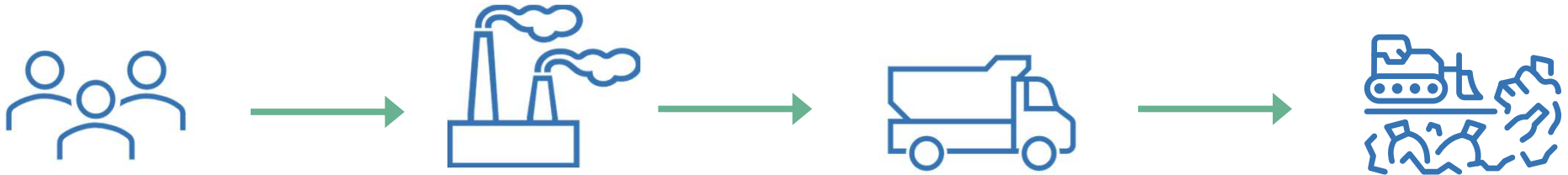


Vancouver's Wastewater Treatment Facilities



Current Process

Wastewater solids are incinerated and resulting ash is sent to landfill



1 ton EVERY
hour

The amount of wastewater solids Vancouver produces, the equivalent weight of a VW Bug

8 years

Estimated remaining useful life of incinerator

10% EVERY
10 YEARS

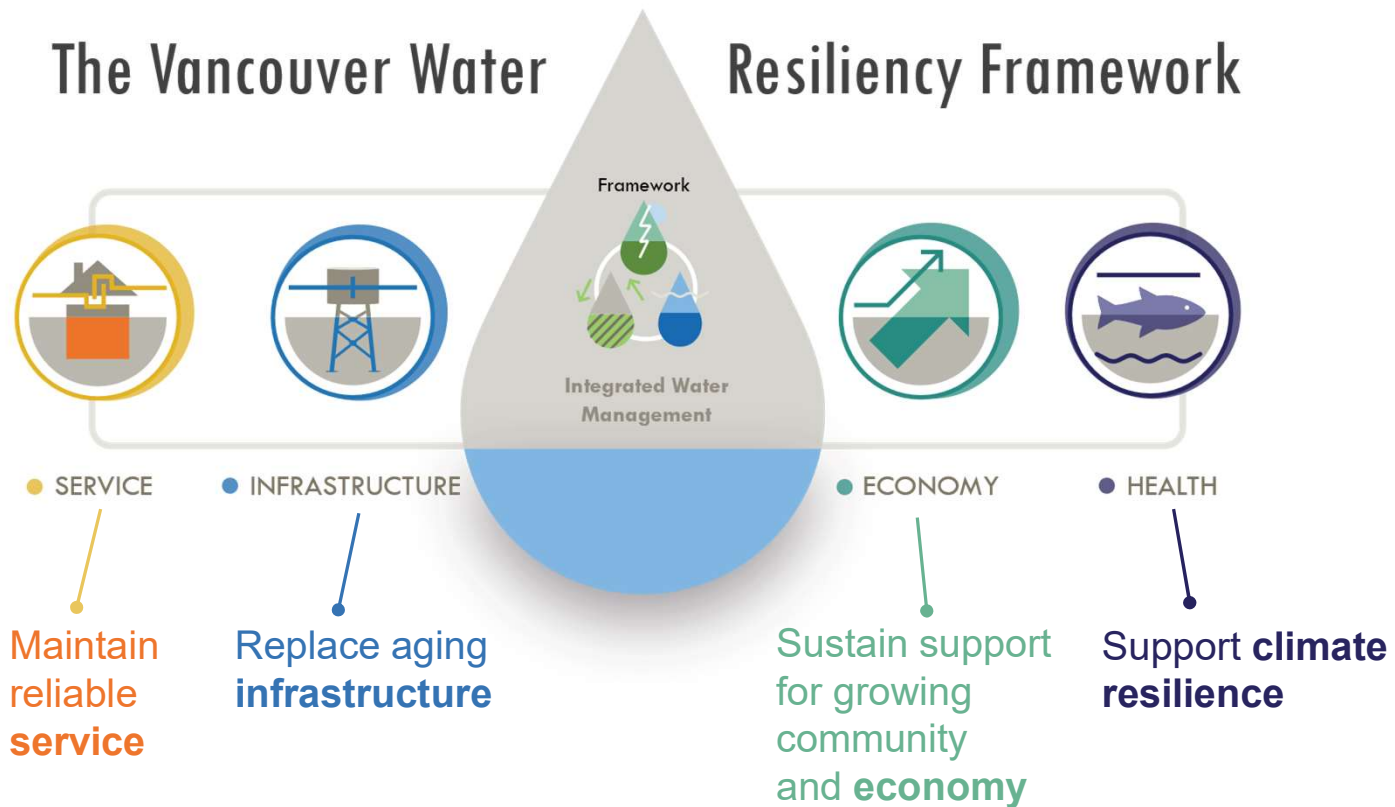
Vancouver's current rate of population increase



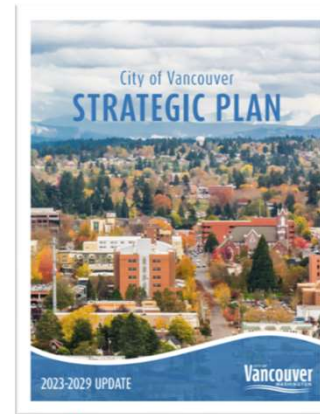
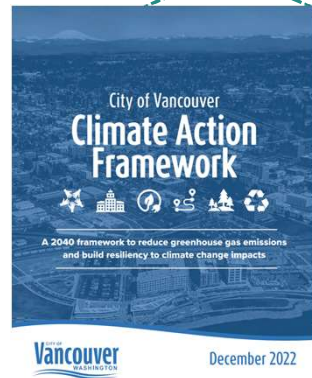
Program Vision

A sustainable solids solution that advances the City's Climate Action Framework and the City's commitments to equity, stewardship, resilience, and community safety, that recovers and reuses resources for the benefit of the community and the environment.

A Generational Investment in Our Future



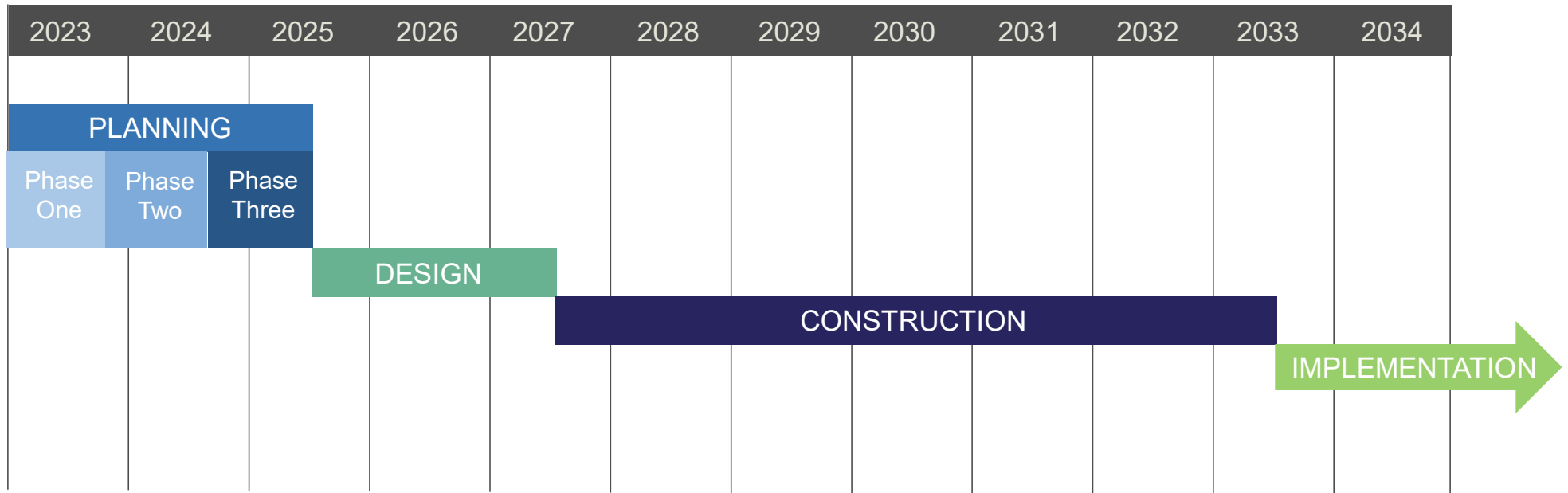
Program Advances City Priorities



Solids
Renewal
Program

OUR VANCOUVER
OUR FUTURE 2045
Comprehensive
Plan

This is a multi-year program



This program is Vancouver's **largest wastewater investment** over the next 15 years

We are Currently in Planning Phase 2



Establish project boundaries, priorities, and decision-making criteria for Phase 2



Evaluate options with experts, city staff and community



Develop the Implementation Plan

All These Values Will Guide Selecting Options



Equity



Climate Impact



**Environmental
Health**



**Economic
Prosperity**



Human Health



**Service
Delivery**



**Regulatory
Compliance**

How important are the following priorities on a scale of 0 (meets minimum requirements) to 10 (greatly exceeds requirements)?

Meets Minimum Requirements	Equity	Greatly Exceeds Requirements
	Climate Impact	
	Environmental Health	
	Economic Prosperity	
	Human Health	
	Service Delivery	
	Regulatory Compliance	



Note to Slide reviewers:
This slide will be a live link to Mentimeter that displays poll results during the workshop activity

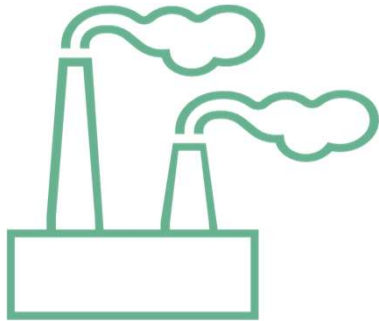


Discussion

- Any comments on poll results? Were there any surprises?
- Can you talk about which values you scored the highest and why?
- Are there other values we should be considering, in addition to those shown?

Program Pathways to be Further Evaluated

Incineration and Landfilling



Rehabilitate/replace current solids handling incineration facility while meeting new regulatory requirements

Resource Recovery



Land Application
Commercial Ag

Land Application
Consumer Product

Renewable Energy

Recover nutrients and renewable energy through combination of new wastewater solids processes. Multiple options to be evaluated.

Closing Comments