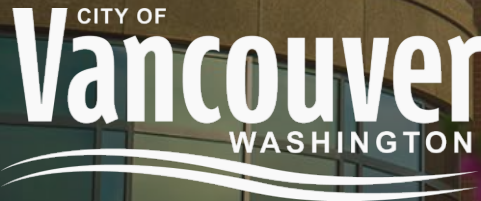


The background of the slide features a photograph of Vancouver City Hall on the left, a modern building with a curved facade and large glass windows. The words "VANCOUVER CITY HALL" are visible on the building's facade. On the right side, there are vibrant pink and purple flowers in the foreground, slightly out of focus. A semi-transparent dark grey banner is overlaid across the top half of the image, containing the main title text.

SR-501 Couplet Project Update: I-5 to Port of Vancouver



City Council Workshop
December 10, 2018

Ryan Lopossa
Streets & Transportation Manager

Presentation Overview

- Background
- Project Overview
- Project Scope
- Issues/Challenges
- Funding/Schedule
- Next Steps





Background

- SR-501 (Mill Plain Blvd/15th Street Couplet) is jointly managed by WSDOT and the City
- WSDOT is responsible for pavement management, reconstruction and regulates use of the ROW
- COV is responsible for traffic operations, maintenance (snow plowing, street sweeping) and managing access to the ROW
- WSDOT is lead agency for the design and construction of the Couplet Project in consultation with COV

Background

- SR-501 is a critical freight route linking I-5 and the Port of Vancouver/West Vancouver Industrial areas
- SR-501 carries approximately 30,000 vehicles per day including over 3,000 freight trips per day
- Oversized freight traffic often must divert to City streets due to vertical clearance issues
- Per 2016 Westside Mobility Strategy, SR-501 Couplet has collision rates that are nearly four times the average for a comparable urban principal arterial

Project Overview

- Improvements to SR-501 Couplet to address limitations to oversized freight deliveries to/from Industrial areas
- Eliminate freight traffic from having to use alternate routes such as Washington Street
- Improvements to Mill Plain/I-5 Interchange to address existing congestion and safety issues
- Evaluate options to add protected bike lanes
- Pavement resurfacing and ADA ramp reconstruction

Project Overview



Project Overview

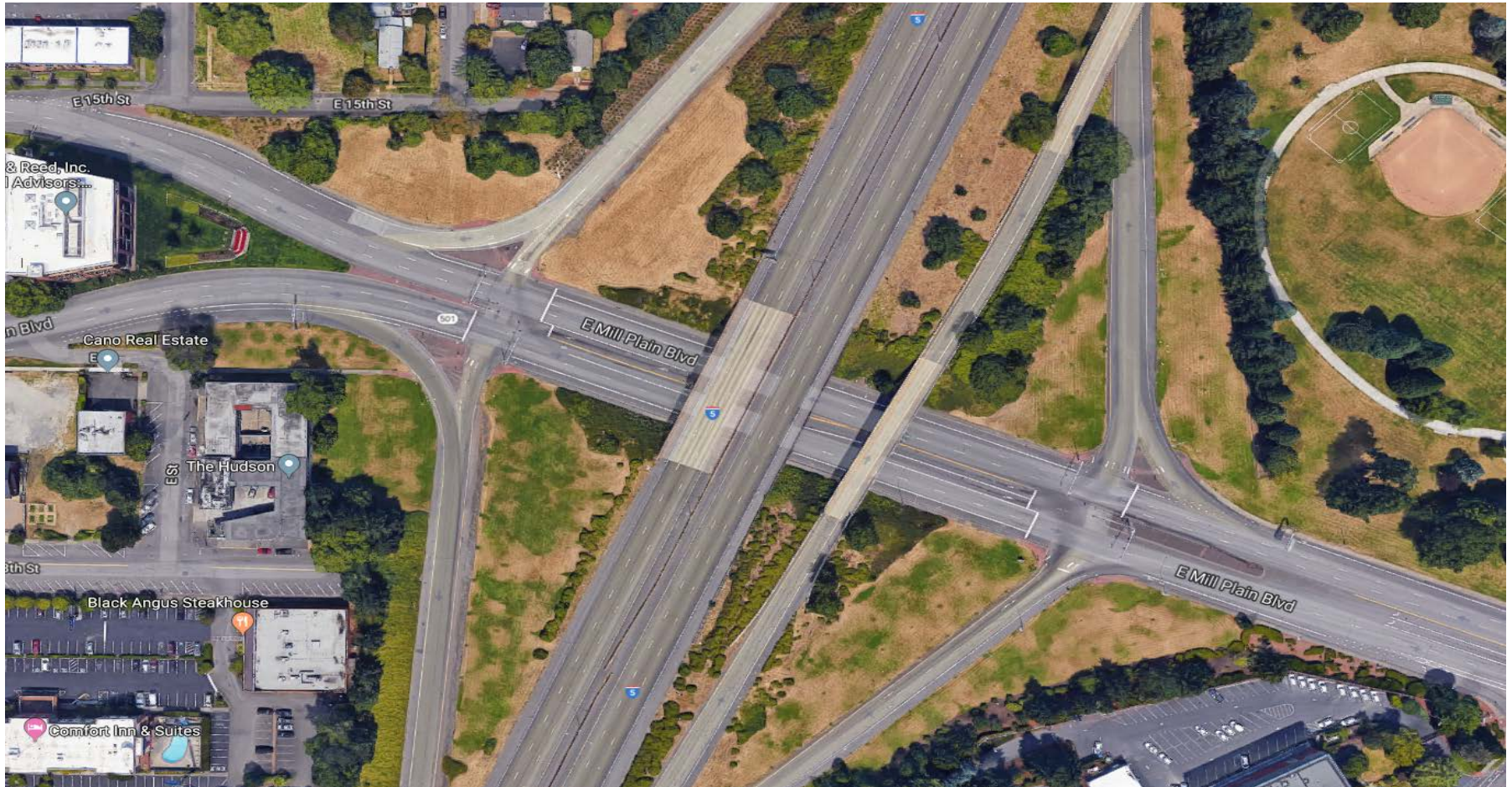


Project Scope

- Reconstruction of SR-501/Main Street intersections & traffic signals to address vertical clearance limitations
- Reconstruction of span wire traffic signals at Mill Plain Blvd/Columbia St & Mill Plain Blvd/Broadway St
- Turn lane improvements and bike/pedestrian safety improvements within SR-501/I-5 interchange area
- Upgrade all traffic signals on the corridor with APS technology*
- Install buffered bike lanes for both WB and EB*

**Subject to available funding*





Issues / Challenges

- Addition of city-standard protected bike lanes requires trade-offs
 - Reduction in number of travel lanes
 - Narrow the width of the travel lanes
 - Removal of on-street parking
 - Removal of pedestrian refuge bulb-outs
- Limited funds available to complete all improvements

Funding / Schedule

- \$7 Million – 2015 Connecting Washington Account (CWA)
- \$1 Million – CWA Mill Plain/I-5 Interchange Replacement
- \$4 Million – WSDOT Funds for ADA/Paver Projects

- Design/Public Outreach – 2019
- Construction – 2020
- Pavement Resurfacing – 2021



Next Steps

- WSDOT currently scoping a menu of improvements
- Finalize design options – Spring 2019
- Public/Business Outreach – Summer 2019



Questions and Discussion

VANCOUVER
CITY HALL

Ryan Lopossa, Streets & Transportation Manager
360-487-7706 | ryan.lopossa@cityofvancouver.us

Project Website:

<https://www.wsdot.wa.gov/Projects/SR501/i5toportofvanimprove/default.htm>

CITY OF
Vancouver
WASHINGTON

SR-501 Couplet Project Update - 15